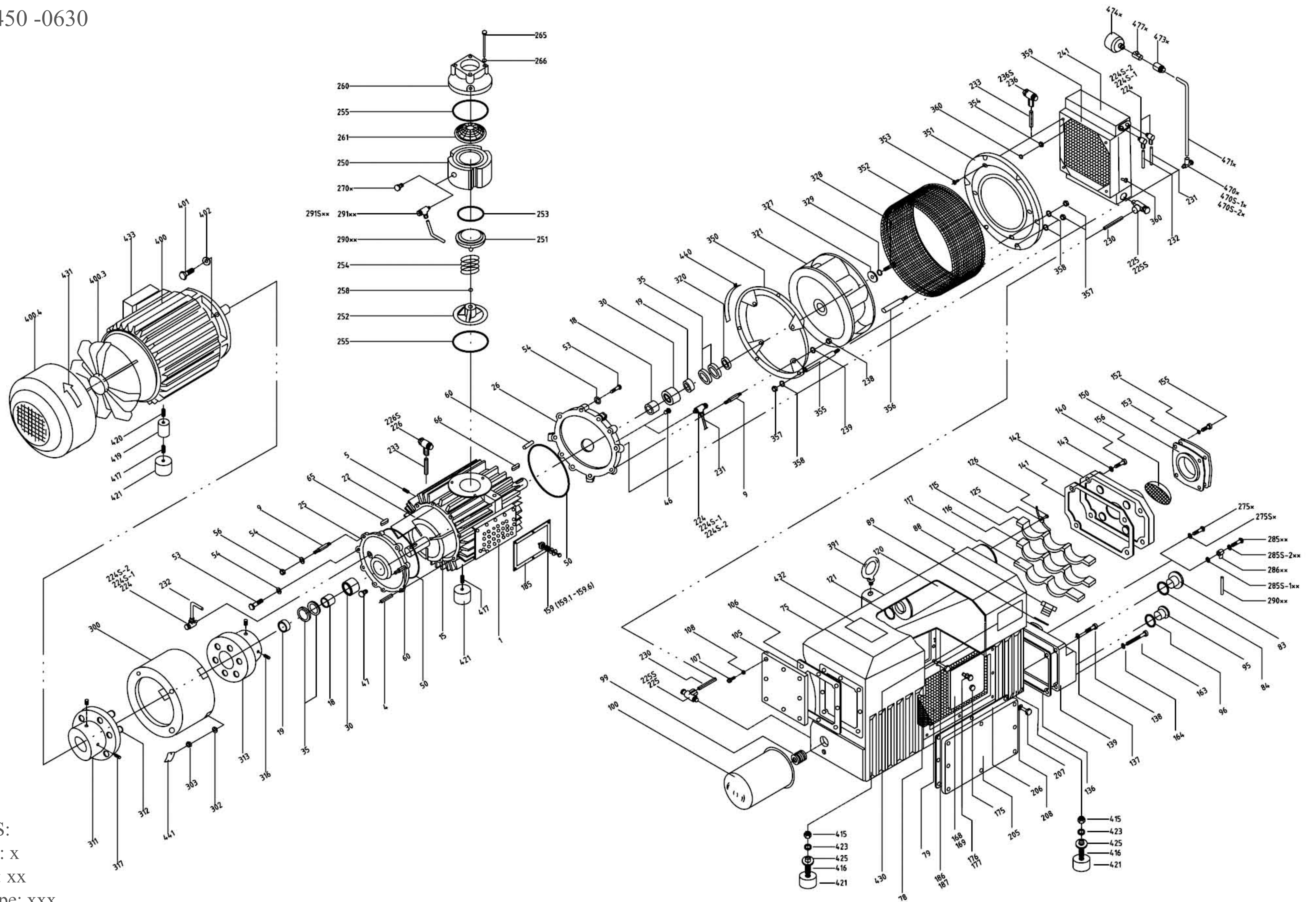


ASS'Y DRAWING
EV-0450 -0630



NOTES:
N Type: x
L Type: xx
NM Type: xxx

Eurovacuum B.V. EV-0450 Parts List

| Pos.No. | Quantity | | Description | Part Description | Art.No. |
|---------|----------|----|---------------------------------------|---------------------------|---------|
| | N | L | | | |
| 1 | 1 | 1 | Cylinder | Ø257x265, pcd300x16 | 080001 |
| 4 | 4 | 4 | Stud | M16x87 | 120004 |
| 5 | 6 | 6 | Set screw | M6x8 | 120005 |
| 9 | 6 | 6 | Stud | M16x76 | 120009 |
| 15 | 1 | 1 | Rotor | Ø214x265 | 080015 |
| 18 | 4 | 4 | Sleeve, Bearing | IR Ø45xØ52x22, Ø45xØ52x40 | 120018 |
| 22 | 3 | 3 | Vane | 265 x 72 x 5.85 | 080022 |
| 25 | 1 | 1 | A-End plate, Motor side | For EV-0450 | 120025 |
| 26 | 1 | 1 | B-End plate, Fan Side | For EV-0450 | 120026 |
| 30 | 2 | 2 | Bearing | RNA6909 | 120030 |
| 35 | 4 | 4 | Shaft seal, viton | Ø52xØ68x9 | 120035 |
| 47 | 1 | 1 | Plug | G1/4" | 50047 |
| 50 | 2 | 2 | O-ring, End plate | Ø265x4.0 | 120050 |
| 53 | 10 | 10 | Hexagon head cap screw | M16x50 | 120053 |
| 54 | 12 | 12 | Spring Lock Washer | S/W, Ø16 | 120054 |
| 56 | 2 | 2 | Hex nut | M16 | 120056 |
| 60 | 4 | 4 | Taper Pin | Ø8x60 | 120060 |
| 65 | 1 | 1 | A-Shaft key, Motor Side | 14x9x45 | 120065 |
| 66 | 1 | 1 | B-Shaft key, Fan Side | 14x9x45 | 120066 |
| 75 | 1 | 1 | Oil sump | EV-0450 | 120075 |
| 79 | 1 | 1 | Sheet metal baffle | 560x200 | 120079 |
| 83 | 1 | 1 | Oil sight glass | G 1" | 50083 |
| 84 | 1 | 1 | Gasket, Oil sight glass | Ø34xØ40x1t | 50034 |
| 88 | 1 | 1 | Plug, Oil fill | G 1" | 120088 |
| 89 | 1 | 1 | O-Ring, Oil fill plug | Ø34x40x1t | 120089 |
| 90 | 1 | 1 | Pressure gage | 0-1 Bar | 120090 |
| 95 | 1 | 1 | Plug, Oil drain | G 1/2" | 02095 |
| 96 | 1 | 1 | O-Ring, Oil drain plug | Ø22x2 | 02089 |
| 99 | 1 | 1 | Pipe Nipple | 1" - 12 UNF | 120099 |
| 100 | 1 | 1 | Oil filter | For EV-0450 | 120100 |
| 105 | 1 | 1 | Oil sump cover plate | 300x240x15/8-Ø9 | 120105 |
| 106 | 1 | 1 | Gasket, Oil sump cover | 300x240x1t | 120106 |
| 107 | 8 | 8 | Allen bolt | M8x25 | 50107 |
| 108 | 8 | 8 | Sealing ring for oil sump cover plate | Ø8xØ13x1t | 50108 |
| 115 | 1 | 1 | Exh. Filter bracket, Upper | For 3 filter elements | 120115 |
| 116 | 1 | 1 | Exh. Filter bracket, Medium | For 3 filter elements | 120116 |
| 117 | 1 | 1 | Exh. Filter bracket, Lower | For 2 filter elements | 120117 |
| 120 | 8 | 8 | Exhaust filter | Ø70 x 500 | 120120 |
| 121 | 8 | 8 | O-Ring, Exhaust filter | Ø35x4.0 | 02121 |
| 125 | 8 | 8 | Exh. Filter spring Assembly | 106x12x1.5t/M4 | 02125 |
| 126 | 8 | 8 | Slotted cheese head machine screw | M4x25 | 02126 |
| 136 | 1 | 1 | Gasket, Service cover | 159x154x1t/4-Ø9 | 120136 |
| 137 | 2 | 2 | Sealing ring | Ø8xØ13x1t | 50108 |
| 138 | 2 | 2 | Allen bolt | M8x30 | 50138 |
| 139 | 1 | 1 | Service cover | 159x154x60/4-Ø9 | 120139 |
| 140 | 8 | 8 | Allen bolt | M8x40 | 120138 |
| 141 | 1 | 1 | Gasket, Separator cover | 420x275x1t | 120141 |
| 142 | 1 | 1 | Separator cover plate | 420x275/8-Ø9 | 120142 |
| 143 | 8 | 8 | Sealing ring | Ø8xØ13x1t | 50108 |
| 150 | 1 | 1 | Gasket, Exhaust cover | 125x125x1t | 120150 |
| 152 | 4 | 4 | Sealing ring | Ø8xØ13x1t | 50108 |
| 153 | 1 | 1 | Exhaust Cover (threaded) | 125x125/4-Ø9 | 120153 |
| 155 | 4 | 4 | Allen bolt | M8x25 | 50107 |
| 156 | 1 | 1 | Outlet screen | Ø95x1t | 120156 |
| 159 | 7 | 7 | Exhaust valve ass'y(159.1~ 159.6) | completed | 50159 |
| 159,1 | 7 | 7 | Exhaust valve fixed bolt | | 50159,1 |
| 159,2 | 7 | 7 | Exhaust valve washer | | 50159,2 |
| 159,3 | 7 | 7 | Exhaust valve spring | | 50159,3 |
| 159,4 | 7 | 7 | Exhaust valve plate | | 50159,4 |
| 159,5 | 7 | 7 | Exhaust valve lock nut | | 50159,5 |
| 159,6 | 7 | 7 | Exhaust valve seat plate | Ø54xØ10x4t | 50159,6 |

Eurovacuum B.V. EV-0450 Parts List

| Pos.No. | Quantity | | Description | Part Description | Art.No. |
|-------------|----------|---|---------------------------------------|----------------------|-----------|
| | N | L | | | |
| 163 | 2 | 2 | Allen bolt | M8x50 | 50163 |
| 164 | 2 | 2 | Sealing ring | Ø8xØ13x1t | 50108 |
| 168 | 1 | 1 | O-Ring, Exh. Valve cover plate | Ø3 x L420 | 50168 |
| 169 | 1 | 1 | Exh. Valve cover plate | 110x225 | 50169 |
| 175 | 1 | 1 | Plug | G1/2" | 50175 |
| 176 | 1 | 1 | Hex nut | M8 | 06191 |
| 177 | 1 | 1 | Stud bolt | M8x95 | 120177 |
| 185 | 1 | 1 | Gasket, Cylinder | 260x185x1t/8-Ø9 | 120185 |
| 186 | 8 | 8 | Allen bolt | M8x95 | 120186 |
| 187 | 8 | 8 | Spring Lock Washer | S/W ,Ø8 | 02190 |
| 205 | 1 | 1 | Oil Sump Side cover plate | 300x240x15t/8-Ø9 | 120205 |
| 206 | 1 | 1 | Gasket, Oil sump Side cover plate | 300x240x1t | 120206 |
| 207 | 9 | 9 | Allen Bolt (Socket Head Cap Screw) | M8 x 25 | 50107 |
| 208 | 9 | 9 | Sealing ring | Ø8xØ13x1t | 50108 |
| 224 | 4 | 4 | BSLM, Hydraulic fitting | BSLM,G1/4" x Ø10 | 120224 |
| 224S-1 | 4 | 4 | Sealing Ring for 224 | Ø19xØ14x2t | 120224S-1 |
| 224S-2 | 4 | 4 | Sealing Ring for 224 | Ø20xØ13.5x1.5t | 120224S-2 |
| 225 | 2 | 2 | BSLM, Hydraulic fitting | BSLM,M26 x Ø22 | 120225 |
| 225S | 2 | 2 | Sealing Ring for 225 | Ø34xØ26x2t | 120225S |
| 226 | 1 | 1 | BSLM, Hydraulic Fitting | BSLM,G3/8" x Ø15 | 120226 |
| 226S | 2 | 2 | Sealing Ring for 226 | Ø24xØ18x2t | 120226S |
| 230 | 1 | 1 | Oil tube (A) | Ø22x1.5 x 880 | 120230 |
| 231 | 1 | 1 | Oil tube (B-1) | Ø10 x 1 x 1140 | 120231 |
| 232 | 1 | 1 | Oil Tube (B-2) | Ø10 x 1 x 1545 | 120232 |
| 233 | 1 | 1 | Oil Tube | Ø15 x1.5 x 955 | 120233 |
| 236 | 1 | 1 | BSLM, Hydraulic fitting | BSLM, G1/2" x Ø15 | 120234 |
| 236S | 1 | 1 | Sealing Ring | Ø29xØ18x2t | 120236S |
| 238 | 1 | 1 | Hex Nut | M16 | 120056 |
| 239 | 1 | 1 | Spring Lock Washer | S/W, Ø16 | 120054 |
| 241 | 1 | 1 | Oil Cooler | For EV-0450 | 120241 |
| 250 | 1 | 1 | Inlet flange, Lower housing | For EV-0450 | 120250 |
| 251 | 1 | 1 | Check valve plate | For EV-0450 | 120251 |
| 252 | 1 | 1 | Check valve guide | For EV-0450 | 120252 |
| 253 | 1 | 1 | O-Ring, Check valve plate | Ø97x 5.0 | 120255 |
| 254 | 1 | 1 | Spring, Check valve | For EV-0450 | 120254 |
| 255 | 2 | 2 | O-Ring, Inlet Flange | Ø140 x 5.0 | 120255 |
| 258 | 1 | 1 | Rubber Ball | Ø12.7 | 120258 |
| 260 | 1 | 1 | Inlet flange, Upper Housing | G 3" | 120260 |
| 261 | 1 | 1 | Inlet screen (Conical) | For EV-0450 | 120261 |
| 265 | 3 | 3 | Allen bolt | M8x140 | 120265 |
| 266 | 3 | 3 | Spring Lock Washer | S/W, Ø8 | 02190 |
| 270* | 1 | - | Plug (For N Only) | G1/8" for 0.5Torr | 02270 |
| 275* | 2 | - | Oil return valve (For N Only) | For 0.5 Torr | 50275 |
| 275S*(276*) | 1 | - | Sealing ring (For N Only) for 275 | Ø8xØ14x1t | 02276 |
| 285** | - | 1 | Oil Recirculation Screw (For L Only) | For 15 Torr | 120285 |
| 285S-1** | - | 1 | Sealing ring (For L Only) for 285** | Ø10xØ14x1t | 120287 |
| 285S-2** | - | 1 | Sealing ring (For L Only) for 285** | Ø8xØ14x1t | 02246 |
| 286** | - | 1 | BSLM Hyd. Fitting (For L Only) | BSLM, M 8 x Ø6 | 120286 |
| 290** | - | 1 | Oil Return tube (For L Only) | Ø6x900 | 120290 |
| 291** | - | 1 | BSLM hydraulic fitting (For L only) | BSLM, M 8 x Ø6 | 120286 |
| 291S** | - | 2 | Sealing Ring for 291 (For L Only) | Ø10xØ14x1t | 120287 |
| 300 | 1 | 1 | Motor mounting bracket | Ø350x230/pcd30xM16-4 | 120300 |
| 302 | 4 | 4 | Spring Lock Washer | S/W, Ø16 | 120054 |
| 303 | 4 | 4 | Hex nut | M16 | 120056 |
| 310 | 1 | 1 | Coupling set (310 ~313) | Coupling set | 120310 |
| 311 | 1 | 1 | Coupling Half, Motor Side | Flange type | 120311 |
| 312 | 8 | 8 | Rubber boot for coupling (Motor Side) | Rubber | 120312 |
| 313 | 1 | 1 | Coupling Half, Pump Side | Flange type | 120313 |
| 316 | 2 | 2 | Set screw (pump side) | M8x10 | 43316 |
| 317 | 2 | 2 | Set screw (Motor side) | M8x10 | 43316 |
| 320 | 1 | 1 | Spacer for fan | Ø 55 xØ45.1 x 10 | 120320 |

Eurovacuum B.V. EV-0450 Parts List

| Pos.No. | Quantity | | Description | Part Description | Art.No. |
|---------|----------|----|----------------------------------|--------------------------------|----------|
| | N | L | | | |
| 321 | 1 | 1 | Fan | Ø 380 x 160 x Ø45 | 120321 |
| 327 | 1 | 1 | Locking Disc | Ø60 x Ø8.5 x 8 | 120327 |
| 328 | 1 | 1 | Hex Head Cap Screw | M8 x 25 | 50107 |
| 329 | 1 | 1 | Spring Lock Washer | S/W, Ø 8 | 02190 |
| 350 | 1 | 1 | Fan Support Ring (Pump Side) | Ø480 | 120350 |
| 351 | 1 | 1 | Fan Support Ring (Radiator Side) | Ø480x260x17t | 120351 |
| 352 | 1 | 1 | Fan Guard | Ø460x170x1.6t | 120352 |
| 353 | 4 | 4 | Allen Bolt | M8X25 | 50107 |
| 354 | 4 | 4 | Hex Nut | M8 | 06191 |
| 355 | 5 | 5 | Fan Supporting Bolt | M12X235 | 120355 |
| 356 | 1 | 1 | Fan Supporting Bolt | M12X140 | 120356 |
| 357 | 11 | 11 | Hex Nut | M 12 | 50303 |
| 358 | 11 | 11 | Spring Lock Washer | S/W, Ø 12 | 50054 |
| 359 | 1 | 1 | Mounting Bracket for radiator | For EV-0450 | 120359 |
| 360 | 12 | 12 | Cheese head Cap Screw | M5 x 10 | 120360 |
| 391 | 1 | 1 | Eye bolt | M24 | 120391 |
| 400 | 1 | 1 | Motor (IEC) | 15Hp, 3Ph, 60Hz, 1200 RPM | 120400A |
| 400 | 1 | 1 | Motor (IEC) | 15Hp, 3Ph, 50Hz, 1200 RPM | 120400B |
| 400,3 | 1 | 1 | Motor fan blade | | 120400,3 |
| 400,4 | 1 | 1 | Motor fan cover | | 120400,4 |
| 401 | 4 | 4 | Hexagon head screw | M16x40 | 120401 |
| 402 | 4 | 4 | Spring Lock Washer | S/W ,Ø16 | 120054 |
| 415 | 2 | 2 | Hex nut | M12 | 50303 |
| 416 | 2 | 2 | Stud | M12x40 | 120416 |
| 417 | 2 | 2 | Slotted set screw | M12x30 | 120417 |
| 419 | 2 | 2 | Spacer for Foot, for IEC motor | For IEC Motor | 080419 |
| 420 | 1 | 1 | Slotted set screw | M12x40 | 120420 |
| 421 | 5 | 5 | Rubber foot | Ø75 x 45 x M12 | 120421 |
| 423 | 2 | 2 | Spring Lock Washer | SW,Ø12 | 50054 |
| 425 | 2 | 2 | Washer | Ø12 x Ø30x3.5 | 120425 |
| 430 | 1 | 1 | Name plate | EV-0450 | 120430 |
| 431 | 1 | 1 | Directional arrow label | | 120431 |
| 470* | 1 | - | BSLM hydraulic fitting | BLS, G1/4"x Ø10 | 120224 |
| 470S*-1 | 1 | - | Sealing ring | Ø13.5xØ20x1.5t | 50046.1 |
| 470S*-2 | 1 | - | Sealing ring | Ø14xØ19x2t | 50046. |
| 471* | 1 | - | Oil tube (C) | Ø10 | 120471 |
| 473* | 1 | - | Fitting | BMC, G3/8" x Ø 10 | 120473 |
| 474* | 1 | - | Gas Ballast | G3/8"x Ø50 x 65 | 120474 |
| 477* | 1 | - | Ball Valve | G 3/8" | 120477 |
| 480* | 1 | - | Gas Ballast Kit | Pos # 470 thru 477 | 120480 |
| 490 | 1 | 1 | Gasket Kit | For EV-0450 | 120490 |
| 500 | 1 | 1 | Maintenance Kit | For EV-0450 | 080500 |
| 600 | 1 | 1 | Motor (NEMA) - 50Hz | 284TC x 15Hp x 6p x 3Ph x 50Hz | 080600B |
| 600 | 1 | 1 | Motor (NEMA) - 60Hz | 286TC x 20Hp x 6p x 3ph x 60Hz | 080600A |
| 600,3 | 1 | 1 | Motor fan blade | | 080600.3 |
| 600,4 | 1 | 1 | Motor fan cover | | 080600.4 |
| 601 | 4 | 4 | Allen Bolt | 5/8"x55 | 120601 |
| 602 | 3 | 3 | Hex head Bolt | M 16 x 40 | 080602 |
| 603 | 4 | 4 | Spring Lock Washer | S/W, Ø16 | 120054 |
| 610 | 1 | 1 | Adapter for Nema motor | EV-0450, For Nema | 080610 |
| 611 | 1 | 1 | Coupling Half, Motor Side(Nema) | Ø 47.7 | 080611 |
| 619 | 2 | 2 | Spacer for foot, for Nema Motor | Hex bar, 38 x 68.25 x M12 | 080619 |
| 630 | 1 | 1 | Motor mounting bracket | EV-0450, For Nema | 080630 |
| 800 | 1 | 1 | Inlet Air Filter | G 3", Al. Alloy Casting | 120800 |
| 900 | 1 | 1 | Pump Module | module | 080900 |