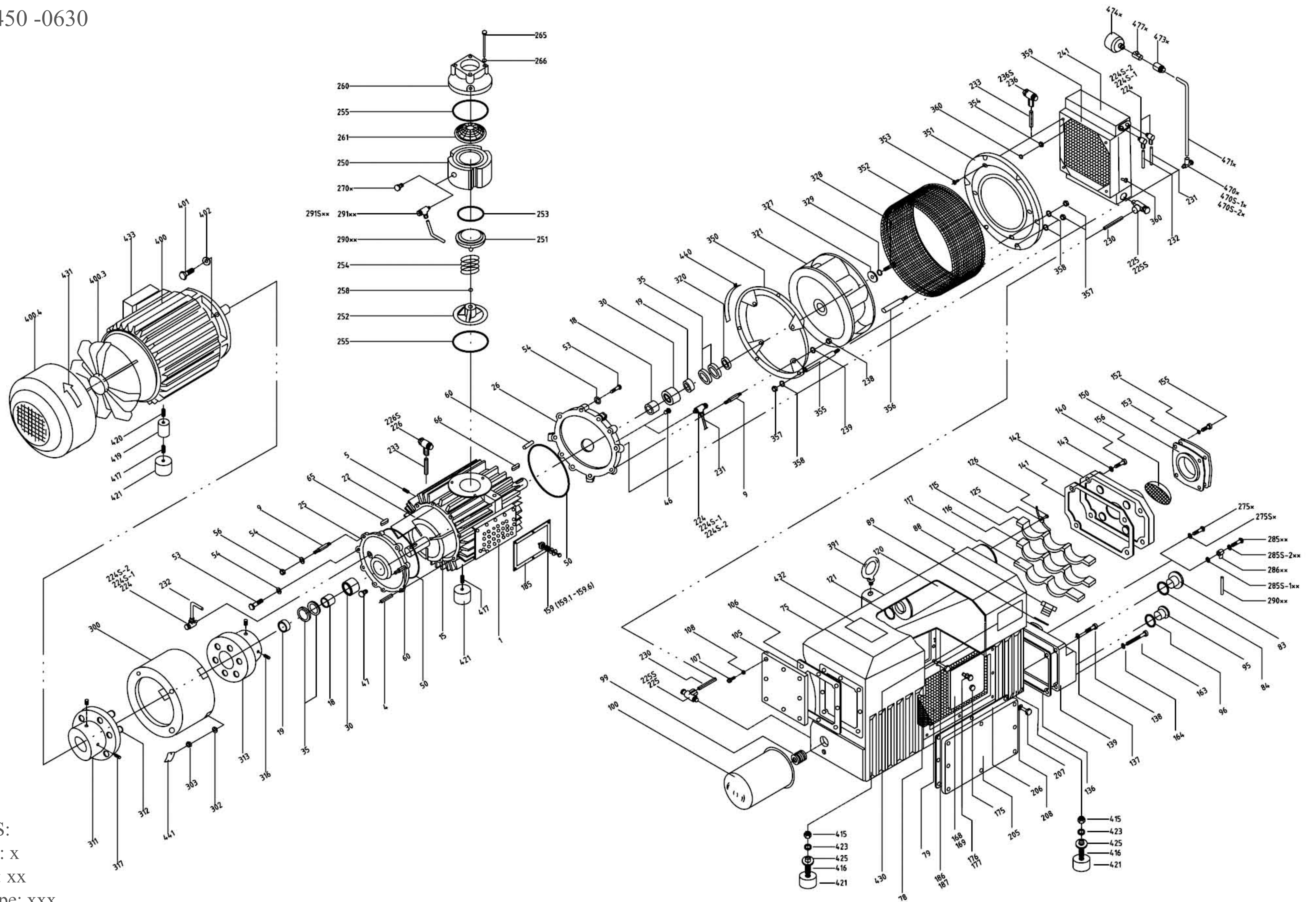


ASS'Y DRAWING
EV-0450 -0630



NOTES:
N Type: x
L Type: xx
NM Type: xxx

Eurovacuum B.V. EV-0630 Parts List

Pos.No.	Quantity		Description	Part Description	Art.No.
	N	L			
1	1	1	Cylinder	Ø257x400, pcd300x16	120001
4	4	4	Stud	M16x87	120004
5	6	6	Set screw	M6x8	120005
9	6	6	Stud	M16x76	120009
15	1	1	Rotor	Ø214x400	120015
18	4	4	Sleeve, Bearing	IR Ø45xØ52x22, Ø45xØ52x40	120018
22	3	3	Vane	400 x 72 x 5.85	120022
25	1	1	A-End plate, Motor side	For EV-0630	120025
26	1	1	B-End plate, Fan Side	For EV-0630	120026
30	2	2	Bearing	RNA6909	120030
35	4	4	Shaft seal, viton	Ø52xØ68x9	120035
47	1	1	Plug	G1/4"	50047
50	2	2	O-ring, End plate	Ø265x4.0	120050
53	10	10	Hexagon head cap screw	M16x50	120053
54	12	12	Spring Lock Washer	S/W, Ø16	120054
56	2	2	Hex nut	M16	120056
60	4	4	Taper Pin	Ø8x60	120060
65	1	1	A-Shaft key, Motor Side	14x9x45	120065
66	1	1	B-Shaft key, Fan Side	14x9x45	120066
75	1	1	Oil sump	EV-0630	120075
79	1	1	Sheet metal baffle	560x200	120079
83	1	1	Oil sight glass	G 1"	50083
84	1	1	Gasket, Oil sight glass	Ø34xØ40x1t	50034
88	1	1	Plug, Oil fill	G 1"	120088
89	1	1	O-Ring, Oil fill plug	Ø34x40x1t	120089
90	1	1	Pressure gage	0-1 Bar	120090
95	1	1	Plug, Oil drain	G 1/2"	02095
96	1	1	O-Ring, Oil drain plug	Ø15x2.3	02089
99	1	1	Pipe Nipple	1" - 12 UNF	120099
100	1	1	Oil filter	For EV-0630	120100
105	1	1	Oil sump cover plate	300x240x15/8-Ø9	120105
106	1	1	Gasket, Oil sump cover	300x240x1t	120106
107	8	8	Allen bolt	M8x25	50107
108	8	8	Sealing ring for oil sump cover plate	Ø8xØ13x1t	50108
115	1	1	Exh. Filter bracket, Upper	For 3 filter elements	120115
116	1	1	Exh. Filter bracket, Medium	For 3 filter elements	120116
117	1	1	Exh. Filter bracket, Lower	For 2 filter elements	120117
120	8	8	Exhaust filter	Ø70x500	120120
121	8	8	O-Ring, Exhaust filter	Ø35x4.0	02121
125	8	8	Exh. Filter spring Assembly	106x12x1.5t/M4	02125
126	8	8	Slotted cheese head machine screw	M4x25	02126
136	1	1	Gasket, Service cover	159x154x1t/4-Ø9	120136
137	2	2	Sealing ring	Ø8xØ13x1t	50108
138	2	2	Allen bolt	M8x30	50138
139	1	1	Service cover	159x154x60/4-Ø9	120139
140	8	8	Allen bolt	M8x40	120138
141	1	1	Gasket, Separator cover	420x275x1t	120141
142	1	1	Separator cover plate	420x275/8-Ø9	120142
143	8	8	Sealing ring	Ø8xØ13x1t	50108
150	1	1	Gasket, Exhaust cover	125x125x1t	120150
152	4	4	Sealing ring	Ø8xØ13x1t	50108
153	1	1	Exhaust Cover (threaded)	125x125/4-Ø9	120153
155	4	4	Allen bolt	M8x25	50107
156	1	1	Outlet screen	Ø95x1t	120156
159	7	7	Exhaust valve ass'y (159.1~ 159.6)	completed	50159
159,1	7	7	Exhaust valve fixed bolt		50159,1
159,2	7	7	Exhaust valve washer		50159,2
159,3	7	7	Exhaust valve spring		50159,3
159,4	7	7	Exhaust valve plate		50159,4
159,5	7	7	Exhaust valve lock nut		50159,5
159,6	7	7	Exhaust valve seat plate	Ø54xØ10x4t	50159,6

Eurovacuum B.V. EV-0630 Parts List

Pos.No.	Quantity		Description	Part Description	Art.No.
	N	L			
163	2	2	Allen bolt	M8x50	50163
164	2	2	Sealing ring	Ø8xØ13x1t	50108
168	1	1	O-Ring, Exh. Valve cover plate	Ø3 x L420	50168
169	1	1	Exh. Valve cover plate	110x225	50169
175	1	1	Plug	G1/2"	50175
176	1	1	Hex nut	M8	06191
177	1	1	Stud bolt	M8x95	120177
185	1	1	Gasket, Cylinder	260x185x1t/8-Ø9	120185
186	8	8	Allen bolt	M8x95	120186
187	8	8	Spring Lock Washer	S/W, Ø8	02190
205	1	1	Oil Sump Side cover plate	300x240x15t/8-Ø9	120205
206	1	1	Gasket, Oil sump Side cover plate	300x240x1t	120206
207	9	9	Allen Bolt (Socket Head Cap Screw)	M8 x 25	50107
208	9	9	Sealing ring	Ø8xØ13x1t	50108
224	4	4	BSLM, Hydraulic fitting	BSLM,G1/4" x Ø10	120224
224S-1	4	4	Sealing Ring for 224	Ø19xØ14x2t	120224S-1
224S-2	4	4	Sealing Ring for 224	Ø20xØ13.5x1.5t	120224S-2
225	2	2	BSLM, Hydraulic fitting	BSLM,M26 x Ø22	120225
225S	2	2	Sealing Ring for 225	Ø34xØ26x2t	120225S
226	1	1	BSLM, Hydraulic Fitting	BSLM,G3/8" x Ø15	120226
226S	2	2	Sealing Ring for 226	Ø24xØ18x2t	120226S
230	1	1	Oil tube (A)	Ø22x1.5 x 880	120230
231	1	1	Oil tube (B-1)	Ø10 x 1 x 1140	120231
232	1	1	Oil Tube (B-2)	Ø10 x 1 x 1545	120232
233	1	1	Oil Tube	Ø15 x1.5 x 955	120233
236	1	1	BSLM, Hydraulic fitting	BSLM, G1/2" x Ø15	120234
236S	1	1	Sealing Ring	Ø29xØ18x2t	120236S
238	1	1	Hex Nut	M16	120056
239	1	1	Spring Lock Washer	S/W, Ø16	120054
241	1	1	Oil Cooler	For EV-0630	120241
250	1	1	Inlet flange, Lower housing	For EV-0630	120250
251	1	1	Check valve plate	For EV-0630	120251
252	1	1	Check valve guide	For EV-0630	120252
253	1	1	O-Ring, Check valve plate	Ø97x 5.0	120255
254	1	1	Spring, Check valve	For EV-0630	120254
255	2	2	O-Ring, Inlet Flange	Ø140 x 5.0	120255
258	1	1	Rubber Ball	Ø12.7	120258
260	1	1	Inlet flange, Upper Housing	G 3"	120260
261	1	1	Inlet screen (Conical)	For EV-0630	120261
265	3	3	Allen bolt	M8x140	120265
266	3	3	Spring Lock Washer	S/W, Ø8	02190
270*	1	-	Plug(For N Only)	G1/8" for 0.5Torr	02270
275*	2	-	Oil return valve (For N Only)	For 0.5 Torr	50275
275S*(276*)	2	-	Sealing ring (For N Only) for 275	Ø8xØ14x1t	02276
285**	-	1	Oil Recirculation Screw (For L Only)	For 15 Torr	120285
285S-1**	-	1	Sealing ring (For L Only) for 285**	Ø10xØ14x1t	120287
285S-2**	-	1	Sealing ring (For L Only) for 285**	Ø8xØ14x1t	02246
286**	-	1	BSLM Hyd. Fitting (For L Only)	BSLM, M 8 x Ø6	120286
290**	-	1	Oil Return tube (For L Only)	Ø6x900	120290
291**	-	1	BSLM hydraulic fitting (For L only)	BSLM, M 8 x Ø6	120286
291S**	-	2	Sealing Ring, for 291 (For L Only)	Ø10xØ14x1t	120287
300	1	1	Motor mounting bracket	Ø350x230/pcd30xM16-4	120300
302	4	4	Spring Lock Washer	S/W, Ø16	120054
303	4	4	Hex nut	M16	120056
310	1	1	Coupling set (310 ~313)	Coupling set	120310
311	1	1	Coupling Half, Motor Side	Flange type	120311
312	8	8	Rubber boot for coupling (Motor Side)	Rubber	120312
313	1	1	Coupling Half, Pump Side	Flange type	120313
316	2	2	Set screw (Pump side)	M8x10	43316
317	2	2	Set screw (Motor side)	M8x10	43316
320	1	1	Spacer for fan	Ø 55 xØ45.1 x 10	120320

Eurovacuum B.V. EV-0630 Parts List

Pos.No.	Quantity		Description	Part Description	Art.No.
	N	L			
321	1	1	Fan	Ø 380 x 160 x Ø45	120321
327	1	1	Locking Disc	Ø60 x Ø8.5 x 8	120327
328	1	1	Hex Head Cap Screw	M8 x 25	50107
329	1	1	Spring Lock Washer	S/W, Ø 8	02190
350	1	1	Fan Support Ring (Pump Side)	Ø480	120350
351	1	1	Fan Support Ring (Radiator Side)	Ø480x260x17t	120351
352	1	1	Fan Guard	Ø460x170x1.6t	120352
353	4	4	Allen Bolt	M8X25	50107
354	4	4	Hex Nut	M8	06191
355	5	5	Fan Supporting Bolt	M12X235	120355
356	1	1	Fan Supporting Bolt	M12X140	120356
357	11	11	Hex Nut	M 12	50303
358	11	11	Spring Lock Washer	S/W, Ø 12	50054
359	1	1	Mounting Bracket for radiator	For EV-0630	120359
360	12	12	Cheese head Cap Screw	M5 x 10	120360
391	1	1	Eye bolt	M24	120391
400	1	1	Motor (IEC)	25Hp,3Ph x 60Hz x 1200 RPM	120400A
400	1	1	Motor (IEC)	20Hp,3Ph x 50Hz x 1200 RPM	120400B
400,3	1	1	Motor fan blade		120400,3
400,4	1	1	Motor fan cover		120400,4
401	4	4	Hexagon head screw	M16x40	120401
402	4	4	Spring Lock Washer	S/W ,Ø16	120054
415	2	2	Hex nut	M12	50303
416	2	2	Stud	M12x40	120416
417	2	2	Slotted set screw	M12 x 30	120417
419	1	1	Spacer for Foot, for IEC motor	For IEC Motor	120419
420	1	1	Slotted set screw	M12 x 40	120420
421	4	4	Rubber foot	Ø75 x 45 x M12	120421
423	2	2	Spring Lock Washer	SW,Ø12	50054
425	2	2	Washer	Ø12 x Ø30x3.5	120425
430	1	1	Name plate	EV-0630	120430
431	1	1	Directional arrow label		120431
470*	1	-	Elbow, Hydraulic Fitting	BLSM, G1/4"xØ10	120224
470S*-1	1	-	Sealing ring	Ø13.5xØ20x1.5t	50046.1
470S*-2	1	-	Sealing ring	Ø14xØ19x2t	50046.
471*	1	-	Oil tube(C)	Ø10	120471
473*	1	-	Fitting	BMC, G3/8" x Ø 10	120473
474*	1	-	Gas Ballast	G3/8"x Ø50 x 65	120474
477*	1	-	Ball Valve	G3/8"	120477
480*	1	-	Gas Ballast Kit	Pos # 470 thru 477	120480
490	1	1	Gasket Kit	For EV-0630	120490
500	1	1	Maintenance Kit	For EV-0630	120500
600	1	1	Motor (NEMA) - 50Hz	286TCx 20Hp x 6p x 3Ph x 50Hz	120600B
600	1	1	Motor (NEMA) - 60Hz	324TCx 25Hp x 6p x 3Ph x 60Hz	120600A
600,3	1	1	Motor fan blade		120600,3
600,4	1	1	Motor fan cover		120600,4
601	4	4	Hex head Bolt	5/8"x 1-1/4"	120601
603	4	4	Spring Lock Washer	S/W, Ø 5/8"	120603
611	1	1	Coupling Half, Motor Side	Ø53	120611
619	2	2	Spacer for foot, for Nema Motor	Hex Bar, 38 x 61 x M12	120619
630	1	1	Motor mounting bracket	EV-0630, For Nema	120630
800	1	1	Inlet Air Filter	G 3", Al. Alloy Casting	120800
900	1	1	Pump Module	module	120900