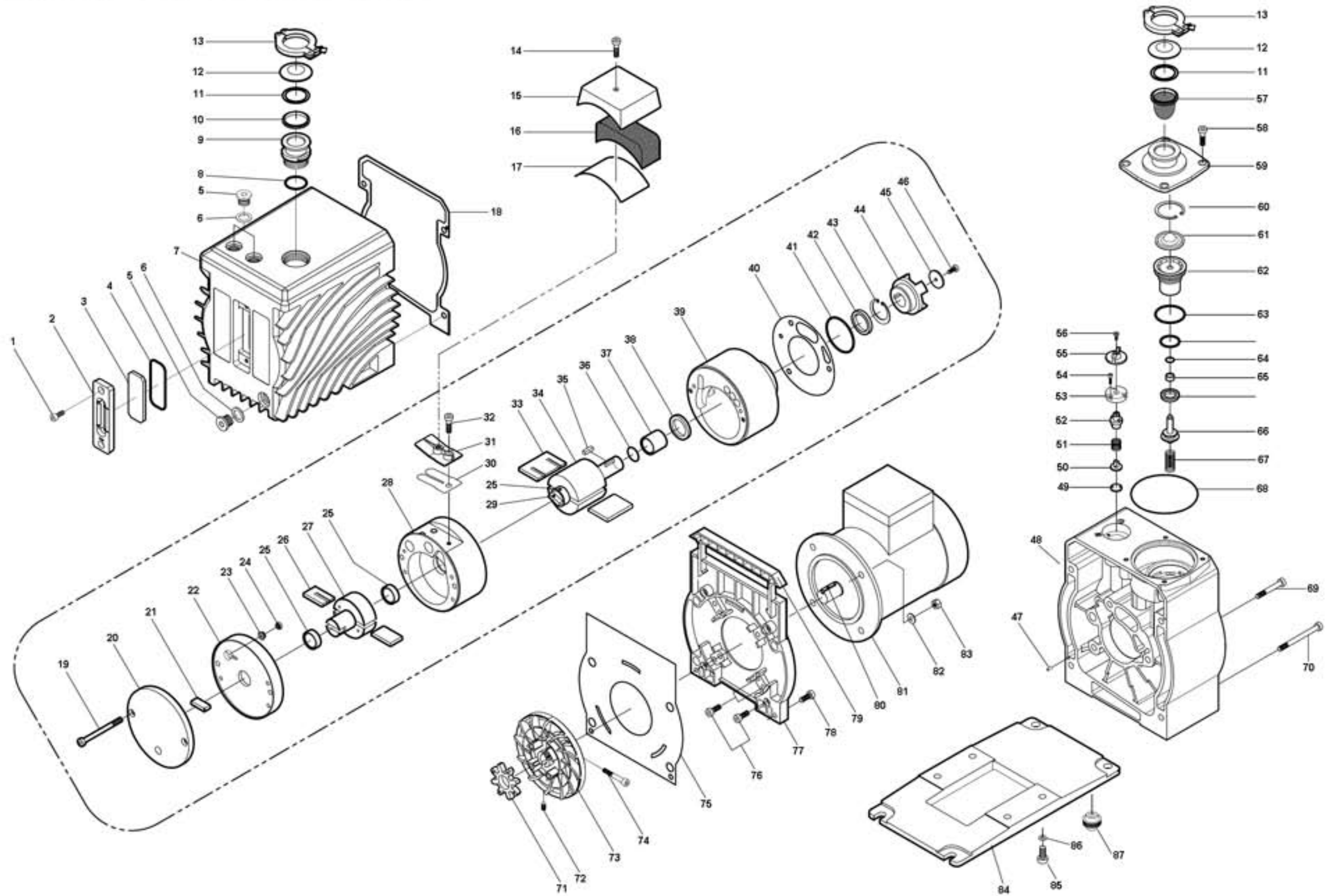


# EXPLODED VIEW OF THE PUMP

Model: EVD-6 EVD-12 EVD-24 EVD-36



## Eurovacuum B.V. EVD-12 Spare parts list

Pos.No.	Quantity	SK	MK	Description	Part Description	Art.No.
SK	1			Seal Kit	See all parts marked at SK	421.911
MK	1			Maintenance Kit	See all parts marked at MK	421.912
1	2			Hex socket head cap screw	M6x15	421.801
2	1			Oil gauge body		421.802
3	1		X	Oil gauge glass		421.803
4	1	X	X	O-ring	G55 (Ø55xØ3.1)	421.804
5	3			Plug	PF3/8	421.805
6	3	X	X	Flat O-ring	Ø15xØ22x2	421.806
7	1			Oil casing		421.807
8	1	X	X	O-ring	G30 (Ø30xØ3.1)	421.808
9	1			Exhaust port	DN25KF	421.809
10	2			Center ring	DN25KF	421.810
11	2	X	X	O-ring	Ø28x5t (Ø28x5)	421.811
12	2			Port cap	DN25KF	421.812
13	2			Clamp ring	DN25KF	421.813
15	1			Exhaust valve cover		421.815
16	1		X	Filter net		421.816
17	1	X	X	O-ring	Ø2x300	421.817
18	1	X	X	Oil casing gasket		421.818
19	2			Hex socket head cap screw	M8x80	421.819
20	1			Rear cover		421.820
21	1		X	Oil pump vane		421.821
22	1			Intermediate plate		421.822
23	1		X	Non return valve spring		421.823
24	1		X	Non return valve		421.824
25	3		X	Rotor sleeve		421.825
26	2		X	2nd Vane		421.826
27	1			2nd Rotor		421.827
28	1			2nd Cylinder		421.828
29	1			Rotor connector		421.829
30	1		X	Exhaust valve plate		421.830
31	1			Valve retainer		421.831
33	2		X	1st Vane		421.833
34	1			1st Rotor		421.834
35	1			Rotor key	5x5x15x1R	421.835
36	1	X	X	Oil seal sleeve O-ring	Ø15x1.5	421.836
37	1		X	Oil seal sleeve		421.837
38	1	X	X	Oil seal	S20x30x7	421.838
39	1			1st Cylinder		421.839
40	1	X	X	Cylinder gasket		421.840
41	1	X	X	O-ring	G50 (Ø50xØ3.1)	421.841
42	1	X	X	Oil seal	D20x30x7	421.842
43	1	X	X	Stop ring	Ø30 (Hole type)	421.843
44	1		X	Pump coupling		421.844
45	1			Coupling disc	Ø18x3	421.845
46	1			Hex socket head cap screw	M5x20	421.846
47	2			Alignment pin	Ø4.2x13	421.847
48	1			Pump housing		421.848
49	1		X	Gas ballast valve plate		421.849
50	1		X	Gas ballast valve sheet		421.850
51	1		X	Gas ballast valve spring		421.851
52	1		X	Gas ballast valve piston		421.852
53	1			G/B Fixed plate		421.853
54	3			Hex socket head cap screw	M4x12	421.854
55	1			G/B Control nut		421.855
56	1			Hex socket head cap screw	M4x15	421.856
57	1	X	X	Inlet filter	DN25KF	421.857
58	4			Hex socket head cap screw	M6x16	421.858
59	1			Inlet port	DN25KF	421.859
60	1		X	Stop ring	Ø52 (Hole type)	421.860
61	1			Valve plate		421.861
62	1			Piston cover		421.862

**Eurovacuum B.V. EVD-12 Spare parts list**

Pos.No.	Quantity	SK	MK	Description	Part Description	Art.No.
63	1	X	X	O-ring	G45 (Ø45xØ3.1)	421.863
64	1	X	X	O-ring	AN110	421.864
65	1		X	Bushing		421.865
66	1			Valve piston		421.866
67	1		X	Spring		421.867
68	1	X	X	O-ring	G75 (Ø75xØ3.1)	421.868
69	3			Hex socket head cap screw	M6x60	421.869
70	4			Hex socket head cap screw	M6x90	421.870
71	1		X	Coupling element		421.871
72	1			Set screw	M6X18	421.872
73	1			Cooling fan		421.873
74	1			Hex socket head cap screw	M6x40	421.874
75	1	X	X	Motor housing gasket		421.875
76	4			Hex socket head cap screw	M6X30	421.876
77	1			Motor housing		421.877
79	1			Portable handle		421.879
80	1			Plate key	5X5X15	421.880
81	1			Motor	0.37KW	421.881
82	4			Washer	Ø6	421.882
83	4			Flange nut	M6	421.883
84	1			Pump base		421.884
86	4			Spring washer	Ø6	421.886
87	4			Foot		421.887
14,32	2			Hex socket head cap screw	M6x20	421.814
78,85	8			Hex socket head cap screw	M6x22	421.878
A2	3			Set screw	M5x8	421.8A2