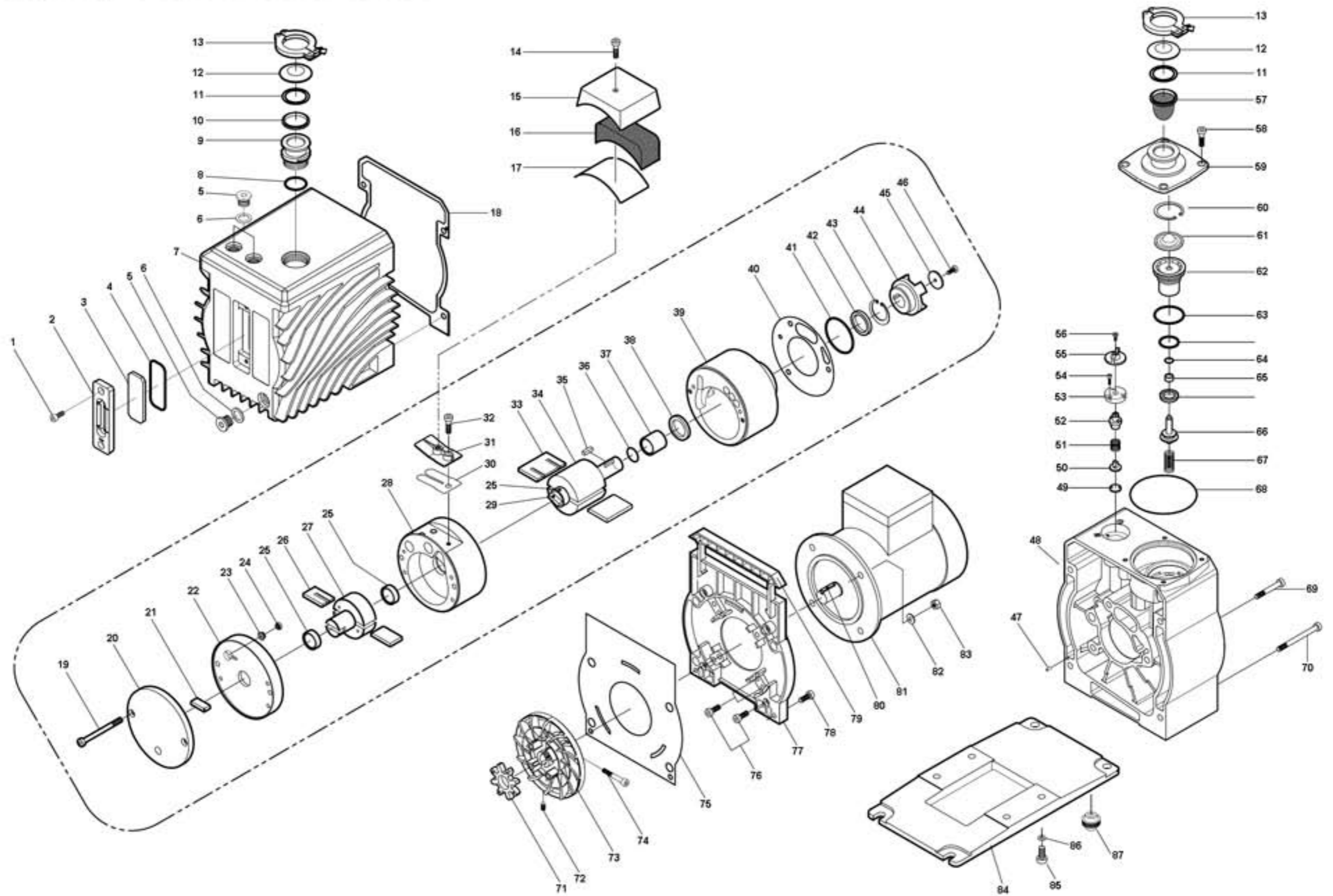


EXPLODED VIEW OF THE PUMP

Model: EVD-6 EVD-12 EVD-24 EVD-36



Eurovacuum B.V. EVD-24 Spare parts list

Pos.No.	Quantity	SK	MK	Description	Part Description	Art.No.
SK	1			Seal Kit	See all parts marked at SK	422.911
MK	1			Maintenance Kit	See all parts marked at MK	422.912
1	2			Hex socket head cap screw	M6x15	422.801
2	1			Oil gauge body		422.802
3	1		X	Oil gauge glass		422.803
4	1	X	X	O-ring	G55 (Ø55xØ3.1)	422.804
5	3			Plug	PF3/8	422.805
6	3	X	X	Flat O-ring	Ø15xØ22x2	422.806
7	1			Oil casing		422.807
8	1	X	X	O-ring	G30 (Ø30xØ3.1)	422.808
9	1			Exhaust port	DN25KF	422.809
10	2			Center ring	DN25KF	422.810
11	2	X	X	O-ring	Ø28x5t (Ø28x5)	422.811
12	2			Port cap	DN25KF	422.812
13	2			Clamp ring	DN25KF	422.813
14	1			Hex socket head cap screw	M6x25	422.814
15	1			Exhaust valve cover		422.815
16	1		X	Filter net		422.816
17	1	X	X	O-ring	Ø2x300	422.817
18	1	X	X	Oil casing gasket		422.818
20	1			Rear cover		422.820
21	1		X	Oil pump vane		422.821
22	1			Intermediate plate		422.822
23	1		X	Non return valve spring		422.823
24	1		X	Non return valve		422.824
25	3		X	Rotor sleeve		422.825
26	2		X	2nd Vane		422.826
27	1			2nd Rotor		422.827
28	1			2nd Cylinder		422.828
29	1			Rotor connector		422.829
30	1		X	Exhaust valve plate		422.830
31	1			Valve retainer		422.831
32	1			Hex socket head cap screw	M6x20	422.832
33	2		X	1st Vane		422.833
34	1			1st Rotor		422.834
35	1			Rotor key	6x6x20x1R	422.835
36	1	X	X	Oil seal sleeve O-ring	Ø20x1.5	422.836
37	1		X	Oil seal sleeve		422.837
38	1	X	X	Oil seal	S25x35x7	422.838
39	1			1st Cylinder		422.839
40	1	X	X	Cylinder gasket		422.840
41	1	X	X	O-ring	G50 (Ø50xØ3.1)	422.841
42	1	X	X	Oil seal	D25x35X7	422.842
43	1	X	X	Stop ring	Ø35 (Hole type)	422.843
44	1		X	Pump coupling		422.844
45	1			Coupling disc	Ø27x3	422.845
46	1			Hex socket head cap screw	M6x22	422.846
47	2			Alignment pin	Ø4.2x13	422.847
48	1			Pump housing		422.848
49	1		X	Gas ballast valve plate		422.849
50	1		X	Gas ballast valve sheet		422.850
51	1		X	Gas ballast valve spring		422.851
52	1		X	Gas ballast valve piston		422.852
53	1			G/B Fixed plate		422.853
54	3			Hex socket head cap screw	M4x12	422.854
55	1			G/B Control nut		422.855
56	1			Hex socket head cap screw	M4x15	422.856
57	1	X	X	Inlet filter	DN25KF	422.857
58	4			Hex socket head cap screw	M6x16	422.858
59	1			Inlet port	DN25KF	422.859
60	1		X	Stop ring	Ø52 (Hole type)	422.860
61	1			Valve plate		422.861
62	1			Piston cover		422.862

Eurovacuum B.V. EVD-24 Spare parts list

Pos.No.	Quantity	SK	MK	Description	Part Description	Art.No.
63	1	X	X	O-ring	G45 (Ø45xØ3.1)	422.863
64	1	X	X	O-ring	AN110	422.864
65	1		X	Bushing		422.865
66	1			Valve piston		422.866
67	1		X	Spring		422.867
68	1	X	X	O-ring	G75 (Ø75xØ3.1)	422.868
69	3			Hex socket head cap screw	M8x70	422.869
71	1		X	Coupling element		422.871
72	1			Set screw	M6X12	422.872
73	1			Cooling fan		422.873
75	1	X	X	Motor housing gasket		422.875
76	4			Hex socket head cap screw	M6X35	422.876
77	1			Motor housing		422.877
79	1			Portable handle		422.879
80	1			Plate key	6X6X30	422.880
81	1			Motor	0.75KW	422.881
82	4			Washer	Ø18xØ6.5x1.5	422.882
83	4			Flange nut	M6	422.883
84	1			Pump base		422.884
86	4			Spring washer	Ø8	422.886
87	4			Foot		422.887
19,70	6			Hex socket head cap screw	M8x95	422.819
78,85	8			Hex socket head cap screw	M8x25	422.878
A2	3			Set screw	M5x8	422.8A2