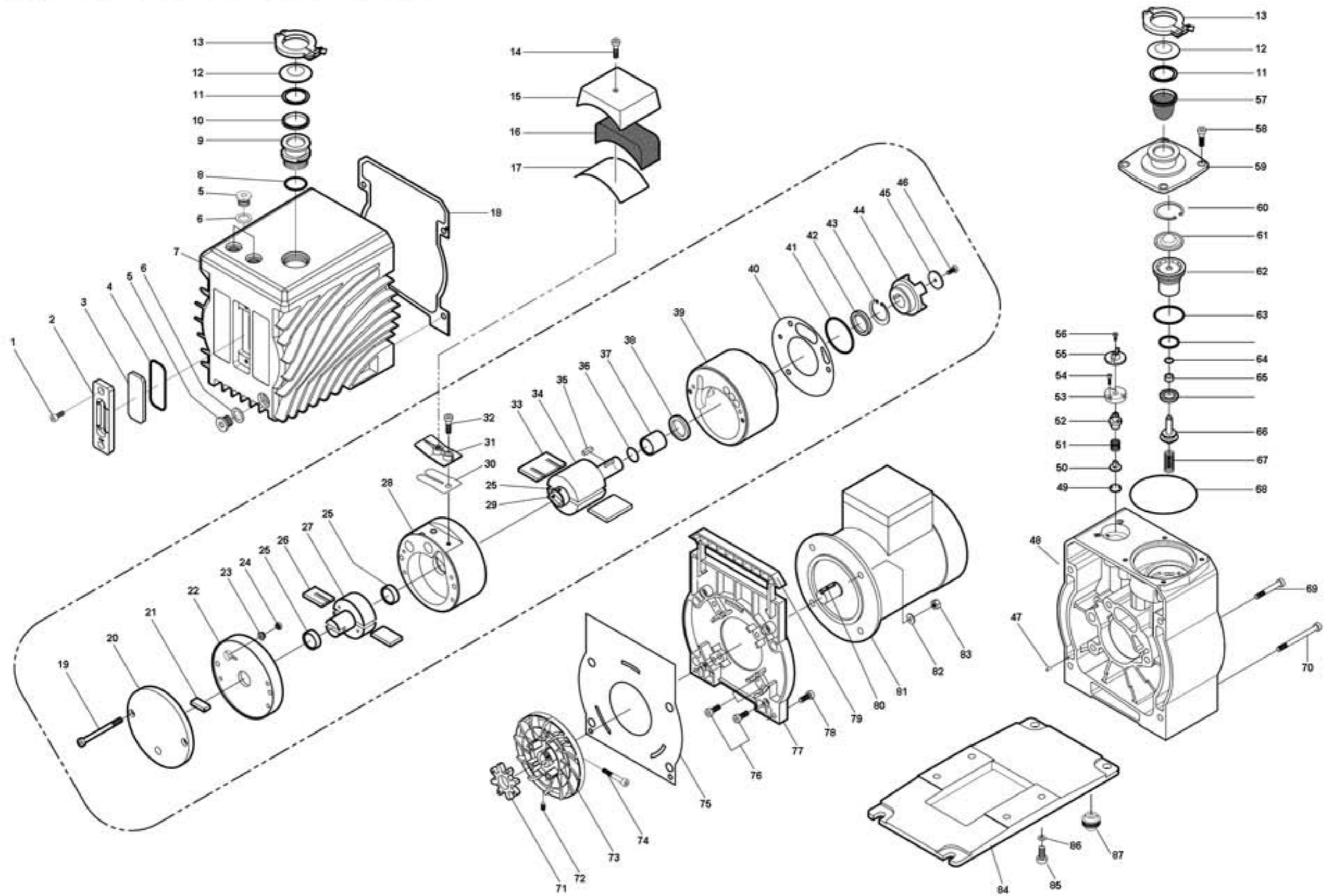


# EXPLODED VIEW OF THE PUMP

Model: EVD-6 EVD-12 EVD-24 EVD-36



## Eurovacuum B.V. EVD-36 Spare parts list

Pos.No.	Quantity	SK	MK	Description	Part Description	Art.No.
SK	1			Seal Kit	See all parts marked at SK	423.911
MK	1			Maintenance Kit	See all parts marked at MK	423.912
1	2			Hex Socket Head Cap Screw	M6x15	423.001
2	1			Oil Gauge Body		423.002
3	1		X	Oil Gauge Glass		423.003
4	1	X	X	O-Ring	G55 (Ø55xØ3.1)	423.004
5	3			Intake Plug	PF3/8	423.005
6	3	X	X	O-Ring(Intake)	Ø15xØ22x2	423.006
7	1			Oil Casing		423.007
8	1	X	X	O-Ring(Exhaust)	G30 (Ø30xØ3.1)	423.008
9	1			Exhaust Port	DN25KF	423.009
10	2			Centering	DN25KF	423.010
10	1			Centering	DN40KF	423.010
11	2	X	X	O-Ring	Ø28x5t (Ø28x5)	423.011
11	1	X	X	O-Ring	Ø42x5t (Ø42x5)	423.011
12	2			Intake/Exhaust Port Cap	DN25KF	423.012
12	1			Intake/Exhaust Port Cap	DN40KF	423.012
13	2			Clamp	DN25KF	423.013
13	1			Clamp	DN40KF	423.013
14	1			Hex Socket Head Cap Screw	M6x25	423.014
15	1			Rear cover		423.015
16	1		X	Filter Net		423.016
17	1	X	X	O-Ring	Ø2x300	423.017
18	1	X	X	Oil casing gasket		423.018
20	1			Rear Cover		423.020
21	1		X	Oil Pump Vane(2nd Rotor Side)		423.021
22	1			Intermediate Cover		423.022
23	1		X	Spring (For Non-Return Valve)		423.023
24	1			Non-Return Valve		423.024
25	3		X	Rotor Sleeve		423.025
26	2		X	2nd Vane		423.026
27	1			2nd Rotor		423.027
28	1			2nd Cylinder		423.028
29	1			Rotor Connector		423.029
30	1		X	Exhaust Valve Plate		423.030
31	1			Valve Retainer		423.031
32	1			Hex Socket Head Cap Screw	M6x20	423.032
33	2		X	1st Vane		423.033
34	1			1st Rotor		423.034
35	1			Key(Rotor)	6x6x20x1R	423.035
36	1	X	X	O-Ring(Rotor)	Ø20x1.5	423.036
37	1		X	Oil Seal Sleeve		423.037
38	1	X	X	Oil Seal	S25x35x7	423.038
39	1			1st Cylinder		423.039
40	1	X	X	Gasket (For Cylinder)		423.040
41	1	X	X	O-Ring	G50 (Ø50xØ3.1)	423.041
42	1	X	X	Oil Seal	D25x35x7	423.042
43	1	X	X	Stop-Ring	Ø35 (Hole type)	423.043
44	1		X	Coupling (Rotor)		423.044
45	1		X	Coupling Disk	Ø27x3	423.045
46	1			Hex Socket Head Cap Screw	M6x22	423.046
47	2			Guide Pin	Ø4.2x13	423.047
48	1			Pump Housing		423.048
49	1		X	Gas Ballast Sheet		423.049
50	1		X	Gas Ballast Valve seat		423.050
51	1		X	Spring (For Gas Ballast Valve)		423.051
52	1		X	G/B Piston		423.052
53	1			Gas Ballast Fixed Plate		423.053
54	3			Hex Socket Head Cap Screw	M4x12	423.054
55	1			G/B Control Nut		423.055
56	1			Hex Socket Head Cap Screw	M4x15	423.056
57	1	X	X	Inlet Filter	DN25KF	423.057
57	1	X	X	Inlet Filter	DN40KF	423.057
58	4			Hex Socket Head Cap Screw	M6x16	423.058

**Eurovacuum B.V. EVD-36 Spare parts list**

Pos.No.	Quantity	SK	MK	Description	Part Description	Art.No.
59	1			Intake Port	DN25KF	423.059
59				Intake Port	DN40KF	423.059
60	1		X	Stop-Ring	Ø52 (Hole type)	423.060
61	1			Valve Plate		423.061
62	1			Piston Cover		423.062
63	1	X	X	O-Ring	G45 (Ø45xØ3.1)	423.063
64	1	X	X	O-Ring	AN110	423.064
65	1		X	Bushing		423.065
66	1			Piston		423.066
67	1		X	Spring (Piston)		423.067
68	1	X	X	O-Ring(Intake Port)	G75 (Ø75xØ3.1)	423.068
69	3			Hex Socket Head Cap Screw	M8x70	423.069
71	1		X	Coupling Element		423.071
72	1			Hex Socket Set Screw	M6X12	423.072
73	1			Cooling Fan		423.073
75	1	X	X	Gasket (For Motor Housing)		423.075
76	4			Hex Socket Head Cap Screw	M6X35	423.076
77	1			Motor Housing		423.077
79	1			Pump Handle		423.079
80	1			Key(For motor)	6X6X30	423.080
81	1			Motor	0.75KW	423.081
82	4			Flat Washer	Ø18xØ6.5x1.5	423.082
83	4			Flange Nut	M6	423.083
84	1			Pump Base		423.084
86	4			Spring Washer	Ø8	423.086
87	4			Foot		423.087
19,70	6			Hex Socket Head Cap Screw	M8x95	423.019
78,85	8			Hex Socket Head Cap Screw	M8x25	423.078
A2	3			Hex Socket Set Screw	M5x8	423.0A2