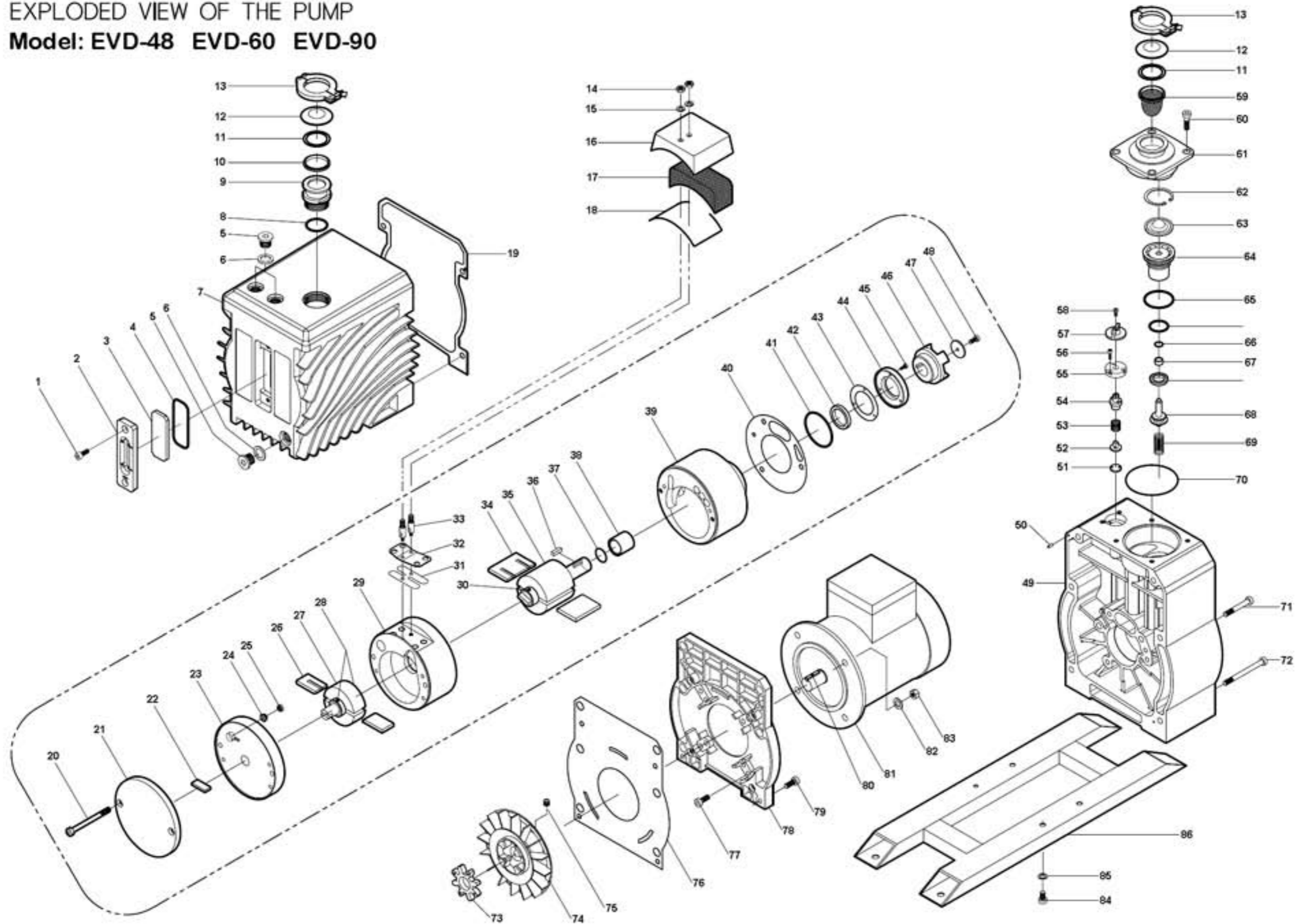


# EXPLODED VIEW OF THE PUMP

Model: EVD-48 EVD-60 EVD-90



## Eurovacuum B.V. EVD-48 Spare parts list

Pos.No.	Quantity	SK	MK	Description	Part Description	Art.No.
SK	1			Seal Kit	See all parts marked at SK	424.911
MK	1			Maintenance Kit	See all parts marked at MK	424.912
1	2			Hex Socket Head Cap Screw	M6x15	424.001
2	1			Oil Gauge Body		424.002
3	1		X	Oil Gauge Glass		424.003
4	1	X	X	O-Ring (Gauge)	G55 (Ø55xØ3.1)	424.004
5	3			Drain Intake Plug	PF3/8	424.005
6	3	X	X	O-Ring (Intake Drain)	Ø15xØ22x2	424.006
7	1			Oil Casing		424.007
8	1	X	X	O-Ring (Exhaust)	P45 (Ø45xØ3.5)	424.008
9	1			Exhaust Port	DN40KF	424.009
10	2			Centering (Exhaust)	DN40KF	424.010
11	2	X	X	O-Ring (Centering)	Ø42x5t (Ø42x5)	424.011
12	2			Intake/Exhaust Port Cap	DN40KF	424.012
13	2			Clamp	DN40KF	424.013
14	2			Hex Nut	M8	424.014
15	2			Flat Washer	Ø8	424.015
16	1			Exhaust Valve Cover		424.016
17	1	X	X	Filter Net		424.017
18	1	X	X	O-Ring (Exhaust Valve Cover)	Ø2x400	424.018
19	1	X	X	Oil casing gasket		424.019
20	2			Hex Socket Head Cap Screw	M8x120	424.020
21	1			Rear Cover		424.021
22	1		X	Oil Pump Vane(2nd Rotor)		424.022
23	1			Intermediate Plate		424.023
24	1		X	Spring(Non-Return)		424.024
25	1		X	Non-Return Valve		424.025
26	2		X	2nd Vane		424.026
27	1			2nd Rotor		424.027
28	2		X	Rotor Sleeve		424.028
29	1			2nd Cylinder		424.029
30	1		X	Rotor Sleeve		424.030
31	1		X	Exhaust Valve Plate		424.031
32	1			Valve Aid Plate		424.032
33	2			Valve Bolt	Ø10x60.3	424.033
34	2		X	1st Vane		424.034
35	1			1st Rotor		424.035
36	1			Key(Rotor)	6x6x28x1R	424.036
37	1	X	X	O-Ring(Rotor)	Ø25x2	424.037
38	1	X	X	Oil Seal Sleeve		424.038
39	1			1st Cylinder		424.039
40	1	X	X	Gasket(1st Cylinder)		424.040
41	1	X	X	O-Ring(1st Cylinder)	G65 (Ø65xØ3.1)	424.041
42	1	X	X	Oil seal	D32x44x8	424.042
43	1	X	X	Gasket(Oil Seal Cover)		424.043
44	1			Oil Seal Cover		424.044
46	1		X	Couping(Rotor)		424.046
47	1			Couping Disk	Ø29x5	424.047
48	1			Hex Socket Head Cap Screw	M6x25	424.048
49	1			Pump Housing		424.049
50	2			Guide Pin(Pump Housing)	Ø4.2x13	424.050
51	1		X	Gas Ballast Valve Plate		424.051
52	1		X	Gas Ballast Sheet		424.052
53	1		X	Spring(Gas Ballsat)		424.053
54	1		X	Gas Ballast Piston		424.054
55	1			Gas Ballast Fixed Plate,G/B		424.055
56	3			Hex Socket Head Cap Screw	M4x12	424.056
57	1			Gas Ballast Control Nut,G/B		424.057
59	1	X	X	Inlet Filter	DN40KF	424.059
61	1			Intake Port	DN40KF	424.061
62	1		X	Stopping	Ø52 (Hole type)	424.062
63	1			Valve Plate		424.063

**Eurovacuum B.V. EVD-48 Spare parts list**

Pos.No.	Quantity	SK	MK	Description	Part Description	Art.No.
64	1			Piston Cover		424.064
65	1	X	X	O-Ring(Piston Cover)	G45 (Ø45xØ3.1)	424.065
66	1	X	X	O-Ring(Piston Cover)	AN110	424.066
67	1		X	Bushing (Piston Cover )		424.067
68	1			Piston		424.068
69	1		X	Spring(Piston)		424.069
70	1	X	X	O-Ring(Intake Port)	G90 (Ø90xØ3.1)	424.070
71	3			Hex Socket Head Cap Screw	M8x80	424.071
72	6			Hex socket head cap screw	M8x130	424.072
73	1		X	Coupling Element		424.073
74	1			Cooling		424.074
75	1			Hex Socket Set Screw	M8x8	424.075
76	1	X	X	Gasket(Motor Housing)		424.076
77	4			Hex Socket Head Cap Screw	M8x40	424.077
78	1			Motor Housing		424.078
79	4			Hex Socket Head Cap Screw	M8x30	424.079
80	1			Key(Motor)	8X7X40	424.080
81	1			Motor	1.5KW	424.081
83	4			Hex Nut	M8	424.083
85	4			Spring Washer	Ø8	424.085
86	1			Pump Base		424.086
45, 58	4			Hex Socket Head Cap Screw	M4x15	424.045
60, 84	8			Hex Socket Head Cap Screw	M8x20	424.060
A1	5			Hex Socket Set Screw	M5x8	424.0A1
A2	2			Hex Socket Head Cap Screw	M8x45	424.0A2