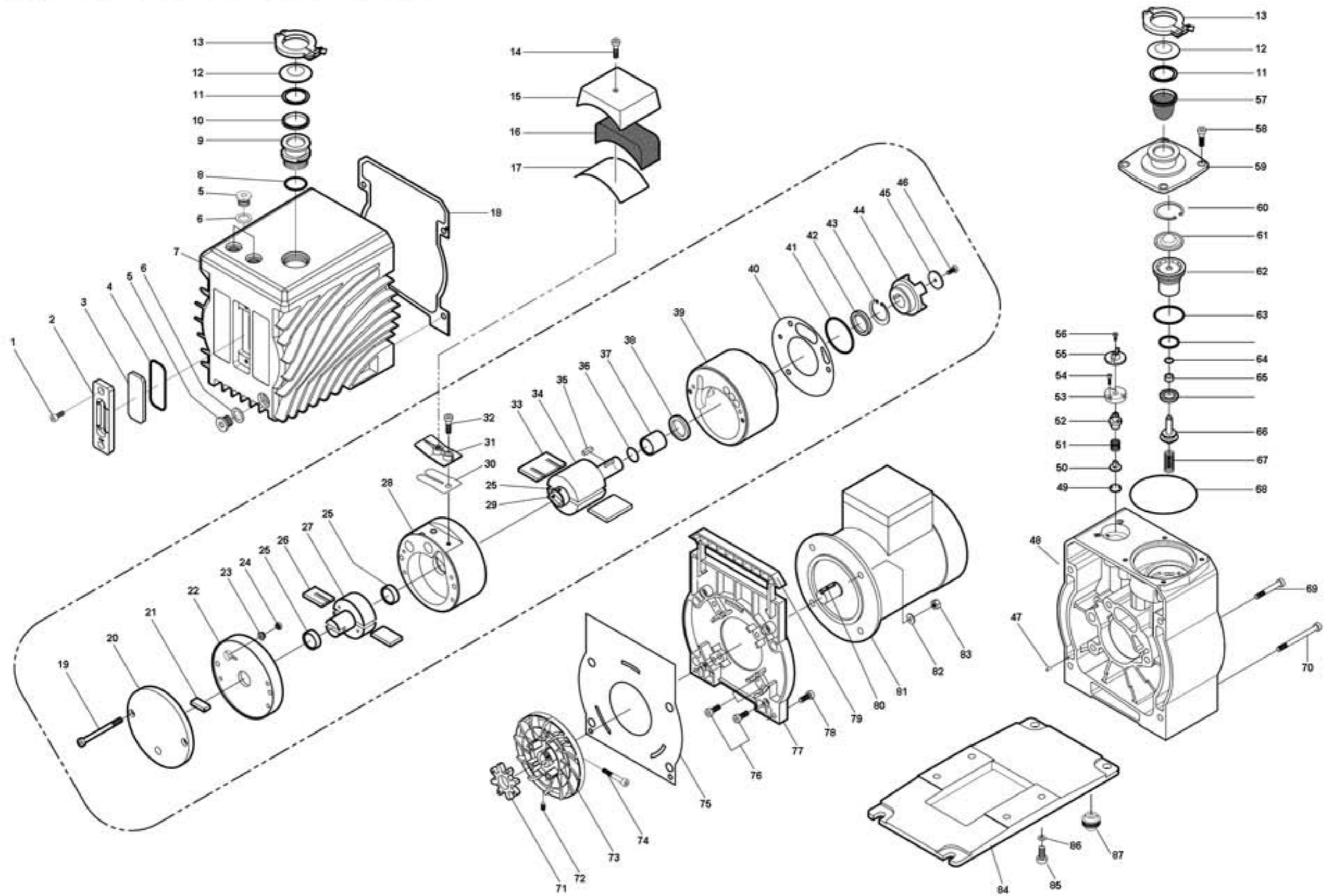


EXPLODED VIEW OF THE PUMP

Model: EVD-6 EVD-12 EVD-24 EVD-36



Eurovacuum B.V. EVD-6 Spare parts list

Pos.No.	Quantity	SK	MK	Description	Part Description	Art.No.
SK	1			Seal Kit	See all parts marked at SK	420.911
MK	1			Maintenance Kit	See all parts marked at MK	420.912
1	2			Hex socket head cap screw	M6x15	420.801
2	1			Oil gauge body		420.802
3	1		X	Oil gauge glass		420.803
4	1	X	X	O-ring	G55 (Ø55xØ3.1)	420.804
5	3			Plug	PF3/8	420.805
6	3	X	X	Flat O-ring	Ø15xØ22x2	420.806
7	1			Oil casing		420.807
8	1	X	X	O-ring	G30 (Ø30xØ3.1)	420.808
9	1			Exhaust port	DN25KF	420.809
10	2			Center ring	DN25KF	420.810
11	2	X	X	O-ring	Ø28x5t (Ø28x5)	420.811
12	2			Port cap	DN25KF	420.812
13	2			Clamp ring	DN25KF	420.813
15	1			Exhaust valve cover		420.815
16	1		X	Filter net		420.816
17	1	X	X	O-ring	Ø2x300	420.817
18	1	X	X	Oil casing gasket		420.818
19	2			Hex socket head cap screw	M8x80	420.819
20	1			Rear cover		420.820
21	1		X	Oil pump vane		420.821
22	1			Intermediate plate		420.822
23	1		X	Non return valve spring		420.823
24	1		X	Non return valve		420.824
25	3		X	Rotor sleeve		420.825
26	2		X	2nd Vane		420.826
27	1			2nd Rotor		420.827
28	1			2nd Cylinder		420.828
29	1			Rotor connector		420.829
30	1		X	Exhaust valve plate		420.830
31	1			Valve retainer		420.831
33	2		X	1st Vane		420.833
34	1			1st Rotor		420.834
35	1			Rotor key	5x5x15x1R	420.835
36	1	X	X	Oil seal sleeve O-ring	Ø15x1.5	420.836
37	1		X	Oil seal sleeve		420.837
38	1	X	X	Oil seal	S20x30x7	420.838
39	1			1st Cylinder		420.839
40	1	X	X	Cylinder gasket		420.840
41	1	X	X	O-ring	G50 (Ø50xØ3.1)	420.841
42	1	X	X	Oil seal	D20x30x7	420.842
43	1	X	X	Stop ring	Ø30 (Hole type)	420.843
44	1		X	Pump coupling		420.844
45	1			Coupling disc	Ø18x3	420.845
46	1			Hex socket head cap screw	M5x20	420.846
47	2			Alignment pin	Ø4.2x13	420.847
48	1			Pump housing		420.848
49	1		X	Gas ballast valve plate		420.849
50	1		X	Gas ballast valve sheet		420.850
51	1		X	Gas ballast valve spring		420.851
52	1		X	Gas ballast valve piston		420.852
53	1			G/B Fixed plate		420.853
54	3			Hex socket head cap screw	M4x12	420.854
55	1			G/B Control nut		420.855
56	1			Hex socket head cap screw	M4x15	420.856
57	1	X	X	Inlet filter	DN25KF	420.857
58	4			Hex socket head cap screw	M6x16	420.858
59	1			Inlet port	DN25KF	420.859
60	1		X	Stop ring	Ø52 (Hole type)	420.860
61	1			Valve plate		420.861
62	1			Piston cover		420.862

Eurovacuum B.V. EVD-6 Spare parts list

Pos.No.	Quantity	SK	MK	Description	Part Description	Art.No.
63	1	X	X	O-ring	G45 (Ø45xØ3.1)	420.863
64	1	X	X	O-ring	AN110	420.864
65	1		X	Bushing		420.865
66	1			Valve piston		420.866
67	1		X	Spring		420.867
68	1	X	X	O-ring	G75 (Ø75xØ3.1)	420.868
69	3			Hex socket head cap screw	M6x60	420.869
70	4			Hex socket head cap screw	M6x90	420.870
71	1		X	Coupling element		420.871
72	1			Set screw	M6X18	420.872
73	1			Cooling fan		420.873
74	1			Hex socket head cap screw	M6x40	420.874
75	1	X	X	Motor housing gasket		420.875
76	4			Hex socket head cap screw	M6X30	420.876
77	1			Motor housing		420.877
79	1			Portable handle		420.879
80	1			Plate key	5X5X15	420.880
81	1			Motor	0.37KW	420.881
82	4			Washer	Ø6	420.882
83	4			Flange nut	M6	420.883
84	1			Pump base		420.884
86	4			Spring washer	Ø6	420.886
87	4			Foot		420.887
14,32	2			Hex socket head cap screw	M6x20	420.814
78,85	8			Hex socket head cap screw	M6x22	420.878
A2	3			Set screw	M5x8	420.8A2