

Chain Clamp

INFICON ISO-KF fittings are manufactured according to ISO 2861/1, DIN 28403 and Pneurop 6606. Our quality fittings are the standard components for all vacuum and high vacuum applications. The high quality INFICON components are designed and tested for leak rates less than 1×10^{-9} mbar l/s.

BENEFITS

- Competitively priced
- Design and measures follow strictly international respected standards
- World wide logistics
- 2011/65/EU RoHS compliant

FEATURES

- For metal seal and elastomer
- Solid lubrication



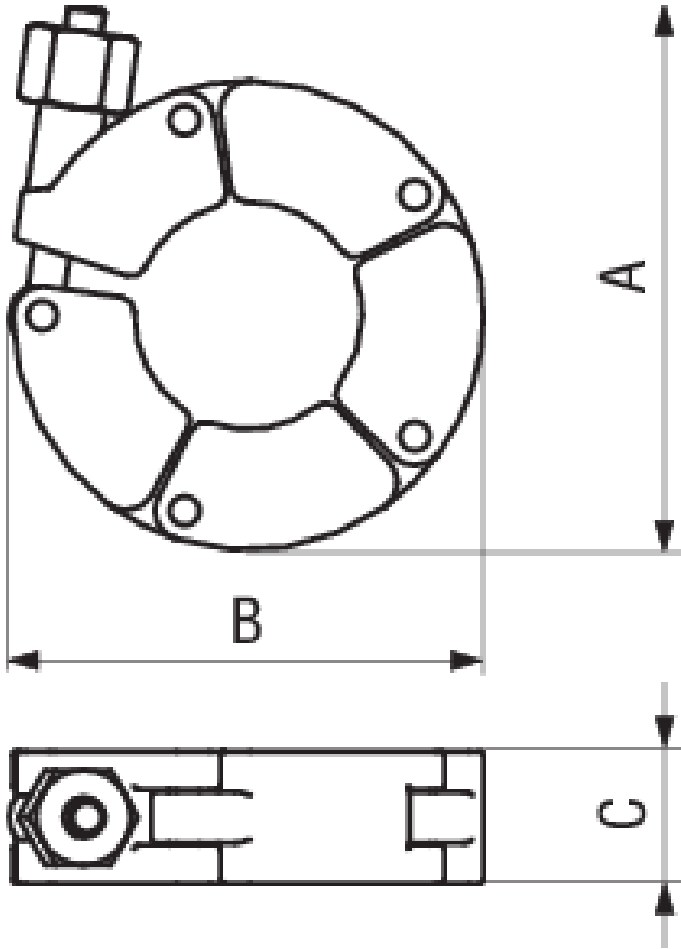
ORDER INFORMATION

Type	DN 10 - 16 ISO-KF	DN 20 - 25 ISO-KF	DN 32 - 40 ISO-KF	DN 50 ISO-KF
Chain clamp DN 10-16 ISO-KF	211-021			
Chain clamp DN 20-25 ISO-KF		211-022		
Chain clamp DN 32-40 ISO-KF			211-023	
Chain clamp DN 50 ISO-KF				211-024

SPECIFICATIONS

Type	DN 10 - 16 ISO-KF	DN 20 - 25 ISO-KF	DN 32 - 40 ISO-KF	DN 50 ISO-KF
Dimension A	72	82,5	85	119
Dimension B	52	62	77	95
Dimension C	18	18	18	20
Tightening torque aluminum max:	2.5 Nm	3.5 Nm	5 Nm	6 Nm
Tightening torque elastomer max:	2.5 Nm	3 Nm	3 Nm	3 Nm
Chain link:	Aluminum 6081	Aluminum 6081	Aluminum 6081	Aluminum 6081
Screw & Nut & Bolt:	Steel 1.6582 / nitro gas carburized	Steel 1.6582 / nitro gas carburized	Steel 1.6582 / nitro gas carburized	Steel 1.6582 / nitro gas carburized

DIMENSIONS



www.inficon.com reachus@inficon.com

Due to our continuing program of product improvements, specifications are subject to change without notice.
RateWatcher is a trademark of INFICON. All other trademarks are the property of their respective owners.

(2015-08) © 2015 INFICON