

Flange with Tube, Long - Steel

INFICON ISO-KF fittings are manufactured according to ISO 2861/1, DIN 28403 and Pneurop 6606. Our quality fittings are the standard components for all vacuum and high vacuum applications. The high quality INFICON components are designed and tested for leak rates less than 1×10^{-9} mbar l/s.

BENEFITS

- Competitively priced
- Design and measures follow strictly international respected standards
- World wide logistics
- 2011/65/EU RoHS compliant



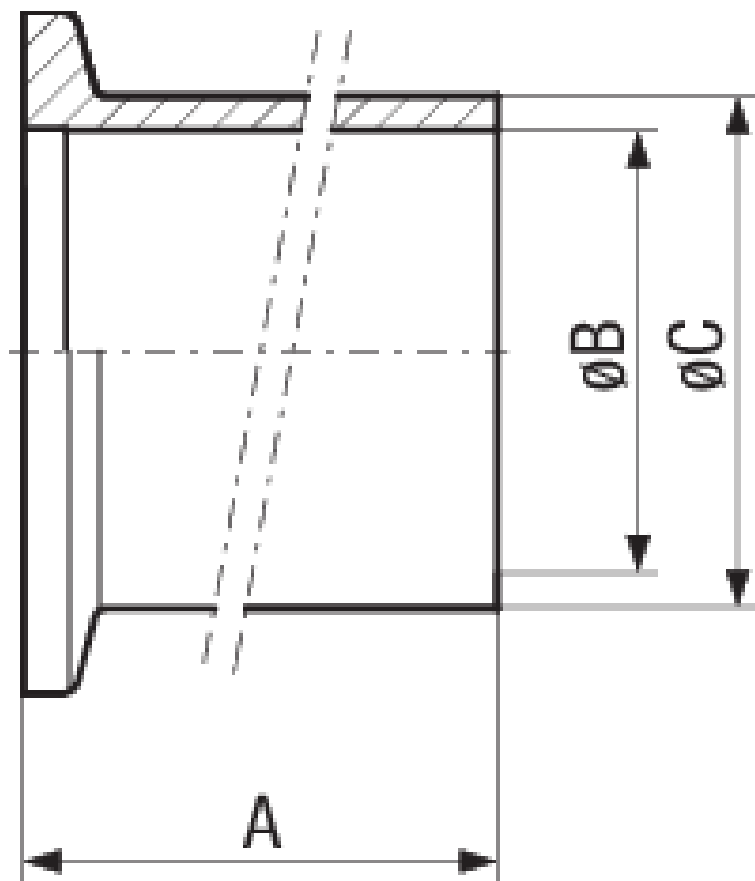
ORDER INFORMATION

Type	DN 10 ISO-KF	DN 16 ISO-KF	DN 25 ISO-KF	DN 40 ISO-KF	DN 50 ISO-KF
Flange with tube socket long, DN 10 KF	211-206				
Flange with tube socket long, DN 16 KF		211-207			
Flange with tube socket long, DN 25 KF			211-208		
Flange with tube socket long, DN 40 KF				211-209	
Flange with tube socket long, DN 50 KF					211-210

SPECIFICATIONS

Type	DN 10 ISO-KF	DN 16 ISO-KF	DN 25 ISO-KF	DN 40 ISO-KF	DN 50 ISO-KF
Dimension A	70	70	70	70	70
Dimension B	12	16	26	41	51
Dimension C	16	20	30	45	55
Material:	Steel 1.0037	Steel 1.0037	Steel 1.0037	Steel 1.0037	Steel 1.0037

DIMENSIONS



www.inficon.com reachus@inficon.com

Due to our continuing program of product improvements, specifications are subject to change without notice.
RateWatcher is a trademark of INFICON. All other trademarks are the property of their respective owners.

(2015-08) © 2015 INFICON