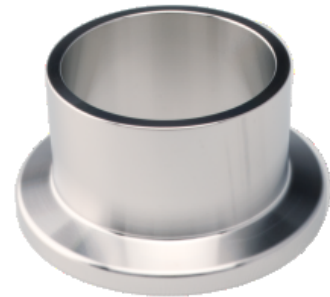


Flange with Tube, Short - Steel

INFICON ISO-KF fittings are manufactured according to ISO 2861/1, DIN 28403 and Pneurop 6606. Our quality fittings are the standard components for all vacuum and high vacuum applications. The high quality INFICON components are designed and tested for leak rates less than 1×10^{-9} mbar l/s.



BENEFITS

- Competitively priced
- World wide logistics
- Design and measures follow strictly international respected standards
- 2011/65/EU RoHS compliant

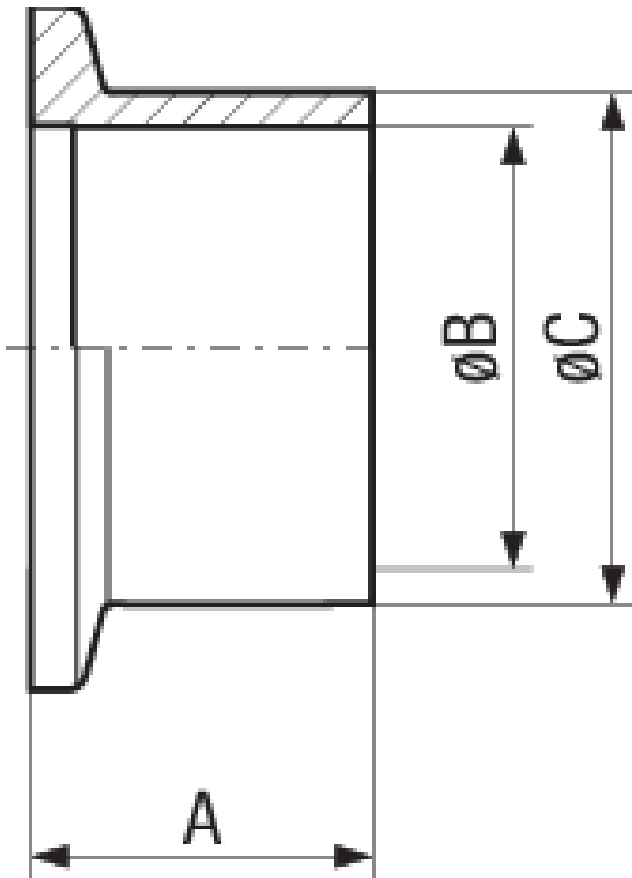
ORDERING INFORMATION

Type	DN 10 ISO-KF	DN 16 ISO-KF	DN 25 ISO-KF	DN 40 ISO-KF	DN 50 ISO-KF
Flange with tube socket short, DN 10 KF - Steel	211-201				
Flange with tube socket short, DN 16 KF - Steel		211-202			
Flange with tube socket short, DN 25 KF - Steel			211-203		
Flange with tube socket short, DN 40 KF - Steel				211-204	
Flange with tube socket short, DN 50 KF - Steel					211-205

SPECIFICATIONS

Type	DN 10 ISO-KF	DN 16 ISO-KF	DN 25 ISO-KF	DN 40 ISO-KF	DN 50 ISO-KF
Dimension A	20	20	20	20	20
Dimension B	12	16	26	41	51
Dimension C	16	20	30	45	55
Material:	Steel 1.0037	Steel 1.0037	Steel 1.0037	Steel 1.0037	Steel 1.0037

DIMENSIONS



www.inficon.com reachus@inficon.com

Due to our continuing program of product improvements, specifications are subject to change without notice. RateWatcher is a trademark of INFICON. All other trademarks are the property of their respective owners.

(2014-09) © 2014 INFICON