

Reducing Centering Ring Aluminum

INFICON ISO-KF fittings are manufactured according to ISO 2861/1, DIN 28403 and Pneurop 6606. Our quality fittings are the standard components for all vacuum and high vacuum applications. The high quality INFICON components are designed and tested for leak rates less than 1×10^{-9} mbar l/s.



BENEFITS

- Competitively priced
- World wide logistics
- Design and measures follow strictly international respected standards
- 2011/65/EU RoHS compliant

ORDERING INFORMATION

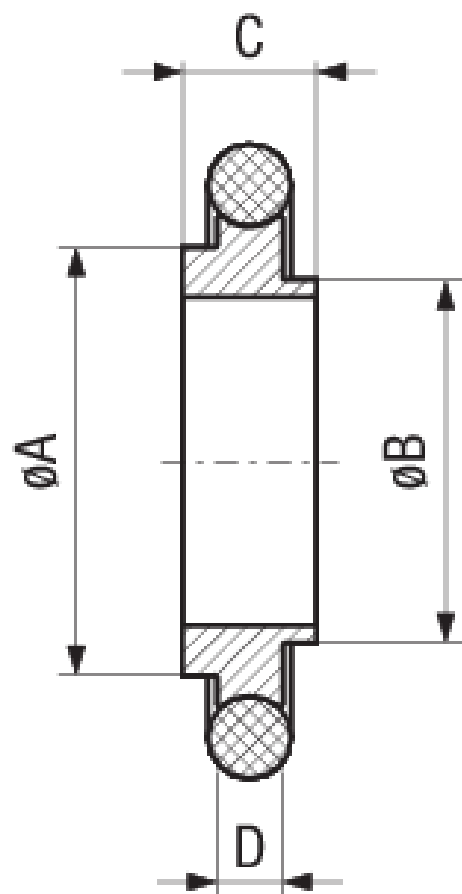
Red. centering ring DN 10-16 KF, Al/FPM	211-075
Red. centering ring DN 20-25 KF, Al/CR	211-073
Red. centering ring DN 20-25 KF, Al/FPM	211-076
Red. centering ring DN 32-40 KF, Al/CR	211-074
Red. centering ring DN 32-40 KF, Al/FPM	211-077
Red. centering ring DN16/10K, Al/CR	211-072
Red. centering ring DN16/10KF, Al/EPDM	211-715
Red. centering ring DN16/10KF, Al/NBR	211-712
Red. centering ring DN16/10KF, Al/VMQ	211-718
Red. centering ring DN25/20KF, Al/EPDM	211-716
Red. centering ring DN25/20KF, Al/NBR	211-713
Red. centering ring DN25/20KF, Al/VMQ	211-719

Red. centering ring DN40/32KF, AI/EPDM	211-717
Red. centering ring DN40/32KF, AI/NBR	211-714
Red. centering ring DN40/32KF, AI/VMQ	211-720

SPECIFICATIONS

Type	.
DN 10-16 ISO-KF	
Dimension A	17
Dimension B	10
Dimension C	12
Dimension D	8
Ring:	Aluminum 6026
Seals:	CR, FPM, NBR, EPDM, VMQ
Dimension E	3.9
DN 20-25 ISO-KF	
Dimension A	26
Dimension B	20
Dimension C	22
Dimension D	8
Ring:	Aluminum 6026
Seals:	CR, FPM, NBR, EPDM, VMQ
Dimension E	3.9
DN 32-40 ISO-KF	
Dimension A	41
Dimension B	32
Dimension C	34
Dimension D	8
Ring:	Aluminum 6026
Seals	CR, FPM, NBR, EPDM, VMQ
Dimension E	3.9

DIMENSIONS



www.inficon.com reachus@inficon.com

Due to our continuing program of product improvements, specifications are subject to change without notice.
RateWatcher is a trademark of INFICON. All other trademarks are the property of their respective owners.

(2014-09) © 2014 INFICON