

## Adaptor ISO-KF / NPT Male

---

INFICON ISO-KF fittings are manufactured according to ISO 2861/1, DIN 28403 and Pneurop 6606. Our quality fittings are the standard components for all vacuum and high vacuum applications. The high quality INFICON components are designed and tested for leak rates less than  $1 \times 10^{-9}$  mbar l/s.

### BENEFITS

---

- Competitively priced
- World wide logistics
- Design and measures follow strictly international respected standards
- Surface finish, welds, material specifications and cleanliness meet or exceed high vacuum specifications
- 2011/65/EU RoHS compliant



### ORDERING INFORMATION

---

Type	DN 16 ISO- KF / 1/8" NPT	DN 16 ISO- KF / 1/4" NPT	DN 25 ISO- KF / 1/8" NPT	DN 25 ISO- KF / 1/4" NPT	DN 25 ISO- KF / 1/2" NPT	DN 25 ISO- KF / 1" NPT
Adaptor DN 16 KF - 1/4 NPT, male		211-552				
Adaptor DN 16 KF - 1/8 NPT, male	211-551					
Adaptor DN 25 KF - 1 NPT, male						211-557
Adaptor DN 25 KF - 1/2 NPT, male					211-556	
Adaptor DN 25 KF - 1/4 NPT, male				211-555		
Adaptor DN 25 KF - 1/8 NPT, male			211-554			
Adaptor DN 40 KF - 1 1/2 NPT, male						
Adaptor DN 40 KF - 1 1/4 NPT, male						
Adaptor DN 40 KF - 1 NPT, male						
Adaptor DN 40 KF - 1/2 NPT, male						
Adaptor DN 40 KF - 1/4 NPT, male						
Adaptor DN 40 KF - 2 NPT, male						

## SPECIFICATIONS

Type	DN 16 ISO- KF / 1/8" NPT	DN 16 ISO- KF / 1/4" NPT	DN 25 ISO- KF / 1/8" NPT	DN 25 ISO- KF / 1/4" NPT	DN 25 ISO- KF / 1/2" NPT	DN 25 ISO- KF / 1" NPT
Dimension A	40	40	40	40	50	60
Dimension B	17	22	17	22	30	32
Dimension C	5	7	5	7	14	25
Dimension D	1/8-27 NPT	1/4-18 NPT	1/8-27 NPT	1/4-18 NPT	1/2-14 NPT	1-11 1/2 NPT
Material:	Stainless Steel 303 / 1.4305	Stainless Steel 303 / 1.4305	Stainless Steel 303 / 1.4305	Stainless Steel 303 / 1.4305	Stainless Steel 303 / 1.4305	Stainless Steel 303 / 1.4305

DN 40 ISO- KF / 1/4" NPT	DN 40 ISO- KF / 1/2" NPT	DN 40 ISO- KF / 1" NPT	DN 40 ISO- KF / 1 1/4" NPT	DN 40 ISO- KF / 1 1/2" NPT	DN 40 ISO- KF / 2" NPT
--------------------------------	--------------------------------	---------------------------	----------------------------------	----------------------------------	---------------------------

211-563

211-562

211-561

211-560

211-559

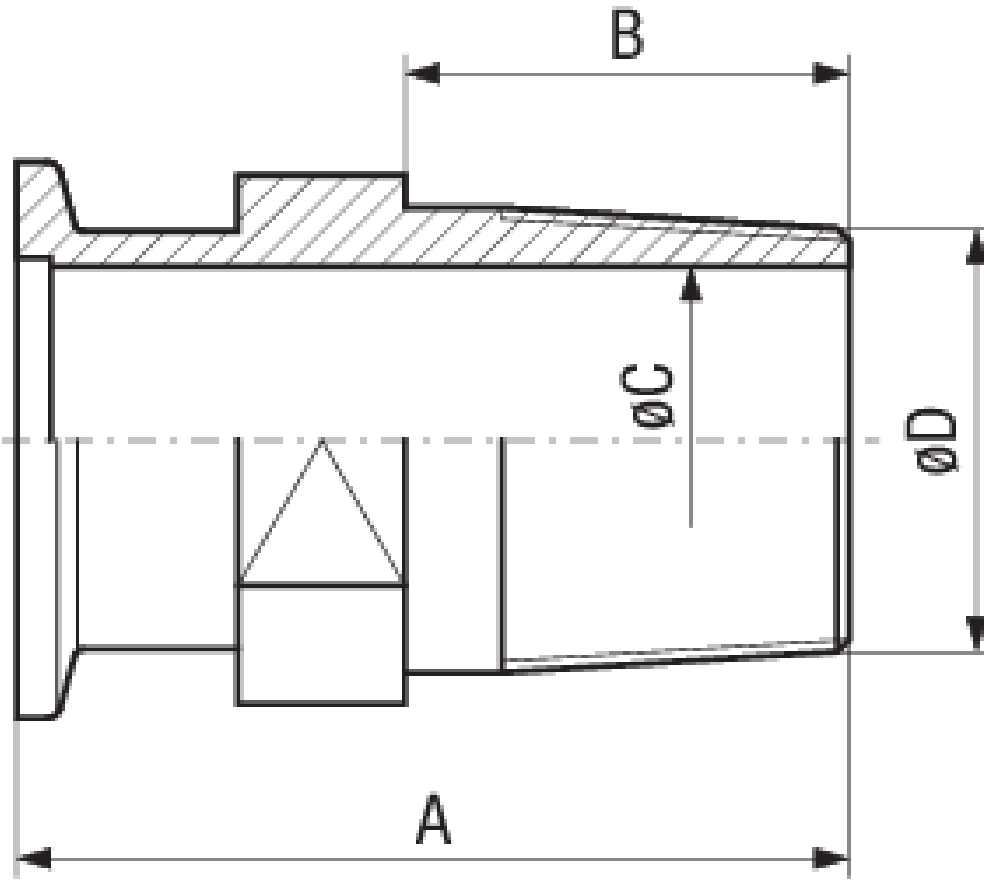
211-564

## SPECIFICATIONS

Type	DN 40 ISO- KF / 1/4" NPT	DN 40 ISO- KF / 1/2" NPT	DN 40 ISO- KF / 1" NPT	DN 40 ISO- KF / 1 1/4" NPT	DN 40 ISO- KF / 1 1/2" NPT	DN 40 ISO- KF / 2" NPT
Dimension A	40	50	60	50	50	50
Dimension B	21	30	33	31.5	28	27
Dimension C	7	14	25	32	32	40
Dimension D	1/4-18 NPT	1/2-14 NPT	1-11 1/2 NPT	1 1/4-11 1/2 NPT	1 1/2-11 1/2 NPT	2-11 1/2 NPT
Material:	Stainless Steel 303 / 1.4305	Stainless Steel 303 / 1.4305	Stainless Steel 303 / 1.4305	Stainless Steel 303 / 1.4305	Stainless Steel 303 / 1.4305	Stainless Steel 303 / 1.4305

## DIMENSIONS

---



[www.inficon.com](http://www.inficon.com)    [reachus@inficon.com](mailto:reachus@inficon.com)

Due to our continuing program of product improvements, specifications are subject to change without notice.  
RateWatcher is a trademark of INFICON. All other trademarks are the property of their respective owners.

(2014-09)    © 2014 INFICON