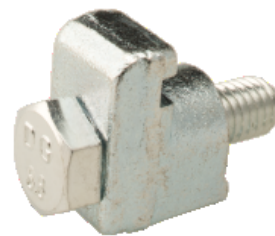


Claw Clamp for Base Plate with Sealing Groove - Steel

INFICON ISO-K quality fittings are manufactured according to ISO 1609, DIN 28404 and Pneurop 6606. Our quality large diameter fittings are the standard vacuum components for all vacuum and high vacuum lines. The high quality INFICON fittings are designed and tested for leak rates less than 1×10^{-9} mbar l/s.



BENEFITS

- Competitively priced
- World wide logistics
- Design and measures follow strictly international respected standards
- Surface finish, welds, material specifications and cleanliness meet or exceed high vacuum specifications
- 2011/65/EU RoHS compliant

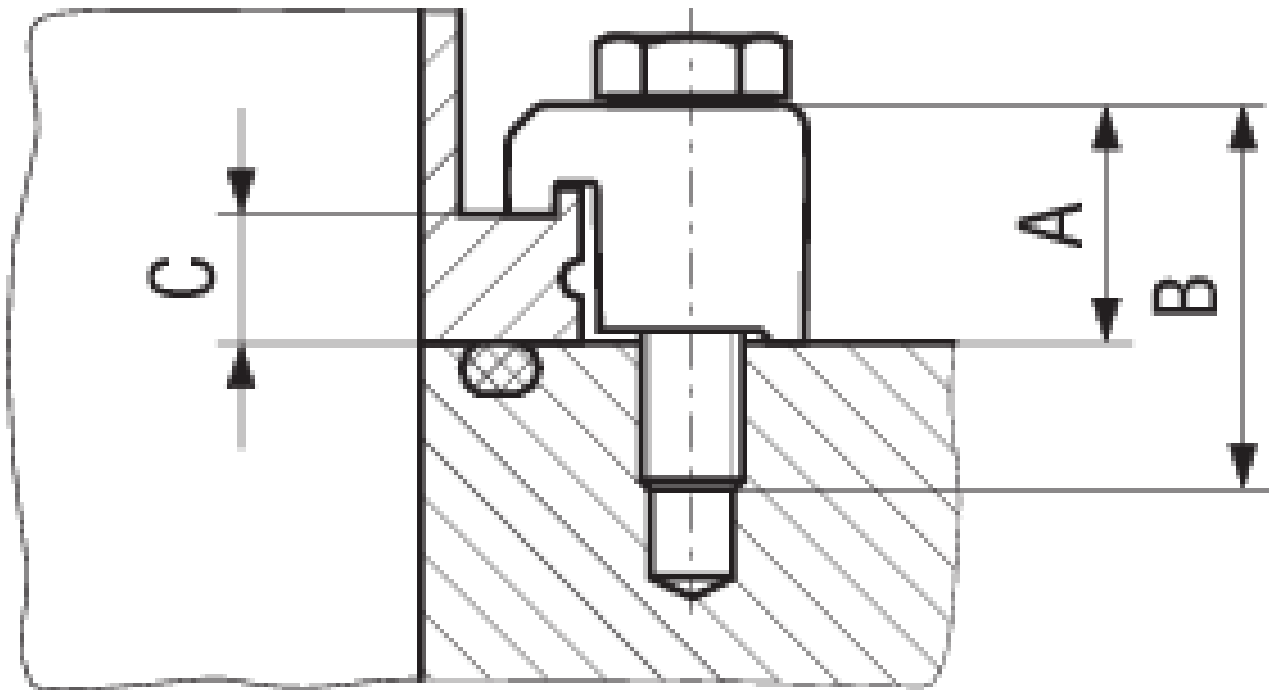
ORDERING INFORMATION

Type	DN 63-100 ISO-K	DN 160-250 ISO-K	DN 320-500 ISO-K	DN 630 ISO-K
Claw grip DN 160-250 ISO-K, 4 pcs.		212-236		
Claw grip DN 320-500 ISO-K, 4 pcs.			212-237	
Claw grip DN 320-500, 630 ISO-K, 4 pcs.				212-233
Claw grip DN 63-100 ISO-K, 4 pcs.	212-235			

SPECIFICATIONS

Type	DN 63-100 ISO-K	DN 160-250 ISO-K	DN 320-500 ISO-K	DN 630 ISO-K
Dimension A	18.6	19	31	36.5
Dimension B	30	35	45	50
Dimension C	10	10	15	20.6
Clamp & Screw:	Steel zinc plated 1045/-	Steel zinc plated 1045/-	Steel zinc plated 1045/-	Steel zinc plated 1045/-
Thread size:	M8	M10	M12	M12
Set of:	4 pcs.	4 pcs.	4 pcs.	4 pcs.

DIMENSIONS



www.inficon.com reachus@inficon.com

Due to our continuing program of product improvements, specifications are subject to change without notice.
RateWatcher is a trademark of INFICON. All other trademarks are the property of their respective owners.

(2014-09) © 2014 INFICON