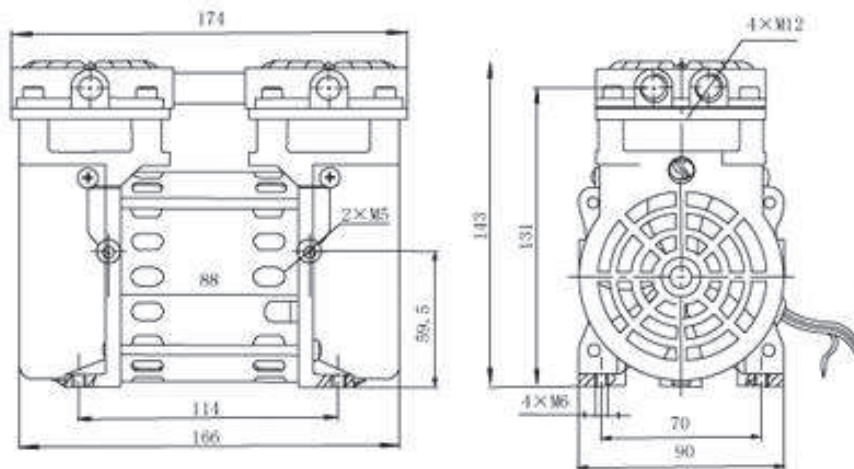
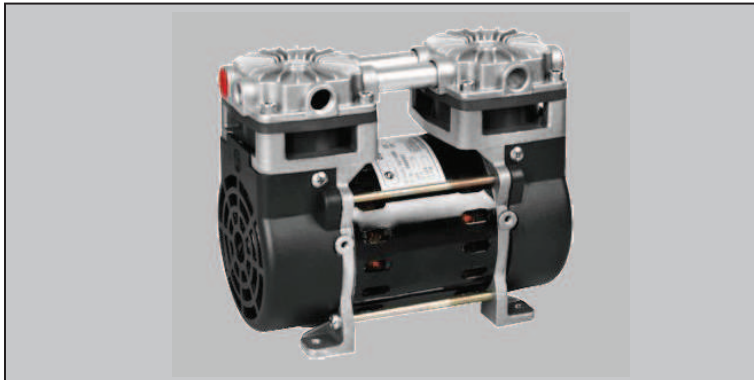


TYPE EVPP-D01



Technical Data		TYPE EVPP-D01	
		Vacuum	Pressure
Nominal displacement	l/m	40	40
Ultimate vacuum/pressure	bar	-0,88	+1,4
Motor power	W	95	130
Rotation speed @50Hz	rpm	1450	1390
Weight	kg	3,5	3,5
Noise (at ultimate pressure)	dB(A)	54	55
Admissible ambient temp.	°C	-5 to 40	-5 to 40
Connections	G(BSP)	1/4"	1/4"
Dimensions LxWxH	mm	174x91x143	174x91x143

Ordering Information	EVPP-D01	
EVPP-D01 with 230V, 50Hz motor	670.010	675.010
Damper G1/4"	670.900	
Accessories	See accessories page	