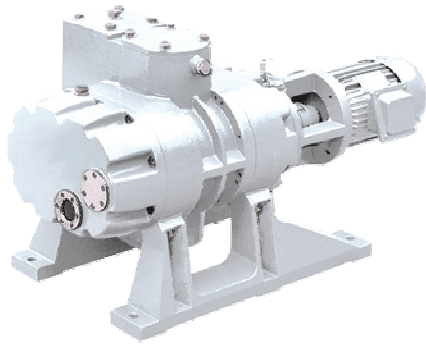
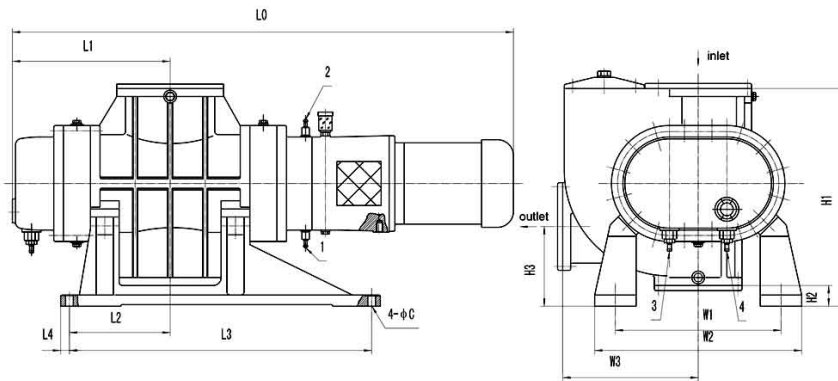
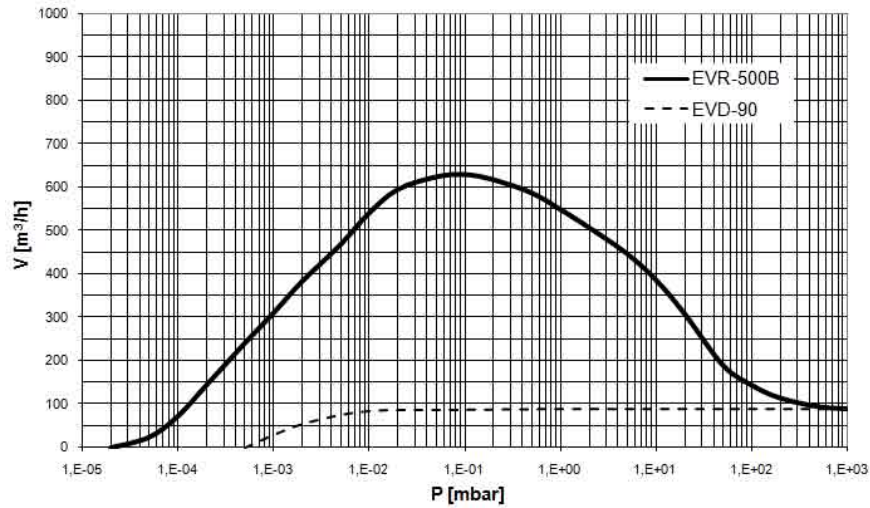


TYPE EVR-500



Pumping speed curve



Dimensions	L0	L1	L2	L3	L4	H1	H2	H3	W1	W2	W3	4- ϕ C
EVR-500	922	267	195	580	20	475	90	195	320	388	245	4- ϕ 18

TYPE EVR-500

Technical Data		TYPE EVR-500	
		50 Hz	60 Hz
Nominal pumping speed	m ³ /h	540	650
Ultimate total pressure ¹	mbar	3·10 ⁻⁴	3·10 ⁻⁴
ΔP of relieve valve	mbar	48	48
Motor power	kW	2,2	2,2
Nominal speed	rpm	2840	3400
Type of protection	IP	55	55
Oil filling for gearbox	ltr	2,8	2,8
Weight (B/M/BM versions)	kg	170 (210/180/220)	170 (210/180/220)
Noise level	dB	72	72
Connection	Inlet	DIN	100
	Outlet	DIN	100

Ordering Information	TYPE EVR-500	
	50 Hz	60 Hz
EVR-500 400V, 50/60Hz (IEC) 400V, 60Hz (NEMA)	662001	662001 662003
EVR-500B with bypass 400V, 50/60Hz (IEC) 400V, 60Hz (NEMA)	662011	662011 662013
EVR-500M with magnetic drive 400V, 50/60Hz (IEC) 400V, 60Hz (NEMA)	662021	662021 662023
EVR-500BM with bypass & magnetic drive 400V, 50/60Hz (IEC) 400V, 60Hz (NEMA)	662031	662031 662033
Other Voltages/Frequencies	Upon request	
Filling of gearbox with special oil	Upon request	
Sealing set	662901	
Maintenance kit	662902	
Standard Oil filling 5 ltr	100402	
Adapter set to ISO-K flanges		
Inlet DN 100 ISO-K	662701	
Outlet DN 100 ISO-K	662702	