

Flange with Tube - Steel

INFICON ISO-K quality fittings are manufactured according to ISO 1609, DIN 28404 and Pneurop 6606. Our quality large diameter fittings are the standard vacuum components for all vacuum and high vacuum lines. The high quality INFICON fittings are designed and tested for leak rates less than 1×10^{-9} mbar l/s.

BENEFITS

- Competitively priced
- World wide logistics
- Design and measures follow strictly international respected standards
- Surface finish, welds, material specifications and cleanliness meet or exceed high vacuum specifications
- 2011/65/EU RoHS compliant

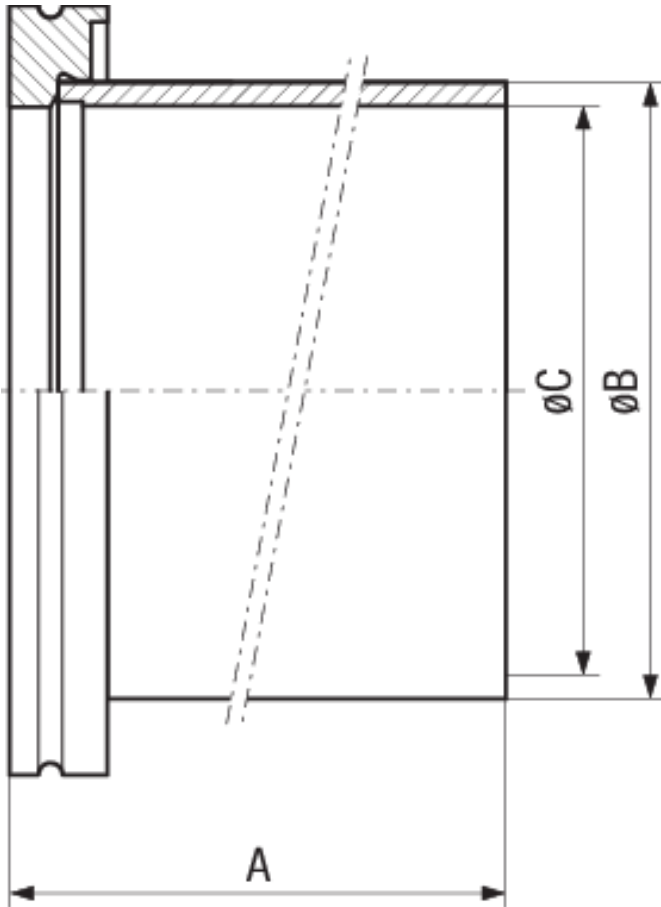
ORDERING INFORMATION

Type	DN 63 ISO-K	DN 100 ISO-K	DN 160 ISO-K	DN 250 ISO-K
Flange with tube, steel, DN 100 ISO-K		212-042		
Flange with tube, steel, DN 160 ISO-K			212-043	
Flange with tube, steel, DN 250 ISO-K				212-045
Flange with tube, steel, DN 63 ISO-K	212-041			

SPECIFICATIONS

Type	DN 63 ISO-K	DN 100 ISO-K	DN 160 ISO-K	DN 250 ISO-K
Dimension A	100	100	100	100
Dimension B	76.1	108	159	267
Dimension C	70.3	102.2	153.2	261
Flange:	Steel -/ 1.0570	Steel -/1.0570	Steel -/1.0570	Steel -/1.0570
Tube:	Steel -/ 1.0831	Steel -/1.0831	Steel -/1.0831	Steel -/1.0831

DIMENSIONS



www.inficon.com reachus@inficon.com

Due to our continuing program of product improvements, specifications are subject to change without notice. RateWatcher is a trademark of INFICON. All other trademarks are the property of their respective owners.

(2014-09) © 2014 INFICON