

Flange with Tube Stainless Steel 304L

INFICON CF quality fittings are manufactured according to ISO 3669 and the latest TS/ ISO 3669-2 standard. INFICON Ultra high vacuum fittings are designed for applications down to 1×10^{-12} mbar and bakeout temperatures up to 400°C.

BENEFITS

- World wide logistics
- Design and measures follow strictly international respected standards
- Surface finish, welds, material specifications and cleanliness meet or exceed high standards
- 2011/65/EU RoHS compliant



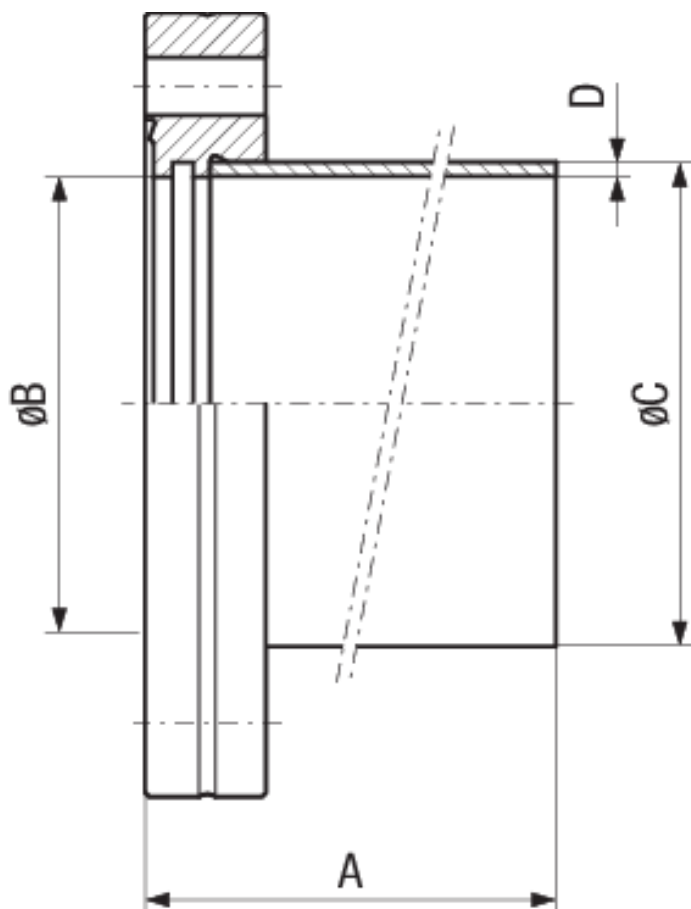
ORDERING INFORMATION

| Type | DN 16 CF | DN 40 CF | DN 63 CF | DN 100 CF | DN 160 CF |
|-------------------------------------|----------|----------|----------|-----------|-----------|
| Flange with pipe socket | | | | | 213-055 |
| Flange with pipe socket DN 100 CF-F | | | | 213-054 | |
| Welding flange with tube | 213-051 | | 213-053 | | |
| Welding flange with tube DN 40 CF-F | | 213-052 | | | |

SPECIFICATIONS

| Type | DN 16 CF | DN 40 CF | DN 63 CF | DN 100 CF | DN 160 CF |
|-------------|----------------------------------|----------------------------------|----------------------------------|----------------------------------|----------------------------------|
| Dimension A | 38 | 63 | 105 | 135 | 167 |
| Dimension B | 17.2 | 39.5 | 66 | 104 | 155 |
| Dimension C | 18 | 40 | 70 | 108 | 159 |
| Dimension D | 1 | 1.6 | 2 | 2 | 2 |
| Material: | Stainless steel 304L / 1.4306 | Stainless steel 304L / 1.4306 | Stainless steel 304L / 1.4306 | Stainless steel 304L / 1.4306 | Stainless steel 304L / 1.4306 |

DIMENSIONS



www.inficon.com reachus@inficon.com

Due to our continuing program of product improvements, specifications are subject to change without notice.
RateWatcher is a trademark of INFICON. All other trademarks are the property of their respective owners.

(2014-09) © 2014 INFICON