



Translation of the original operating instructions

Sniffer line

SL3000 and SL3000XL

Catalog No.

525-001, 525-002, 525-003, 525-004, 521-011, 521-012, 521-013, 521-014, 521-034

From software version

--



INFICON GmbH
Bonner Strasse 498
50968 Cologne, Germany

Table of Contents

1 About these instructions	4
1.1 Target groups	4
1.2 Warnings.....	4
2 Safety.....	5
2.1 Intended use	5
2.2 Duties of the operator	6
2.3 Owner requirements	6
3 Scope of delivery.....	7
4 Description	8
4.1 SL3000	8
4.2 SL3000XL	10
4.3 Technical data	11
5 Installation.....	13
6 Maintenance.....	14
6.1 Maintenance SL3000.....	14
6.2 Maintenance SL3000XL	17
6.3 Maintenance plan	18
7 Decommissioning the measuring instrument	19
7.1 Sending in the device	19
8 Appendix	21
8.1 Accessories and spare parts	21
8.2 CE Declaration of Conformity	23
Index	24

1 About these instructions

These operating instructions describe the construction and maintenance of the sniffer lines:

- SL3000
- SL3000XL

Product names may occur in the document, which are added for identification purposes only and belong to the respective owner of the rights.

1.1 Target groups

This instruction manual is intended for operators and technically qualified personnel with experience in leak detection technology and the integration of leak detectors in leak detection systems. In addition, the installation and use of the device require knowledge of electronic interfaces.

1.2 Warnings

DANGER

Imminent hazard resulting in death or serious injuries

WARNING

Hazardous situation resulting in potential death or serious injuries

CAUTION

Hazardous situation resulting in minor injuries

NOTICE

Hazardous situation resulting in damage to property or the environment

2 Safety

2.1 Intended use

The SL3000 and SL3000XL sniffer lines are used to locate gas leaks on test specimens in conjunction with the leak detectors:

SL3000	SL3000XL
Protec P3000	Protec P3000XL
Ecotec E3000	XL3000flex
UL3000 Fab Plus	
UL3000 Fab ULTRA	
UL6000 Fab	

Incorrect usage

- Use in radioactive areas
- Use of accessories or spare parts, which are not included in this instruction manual
- Use outside the technical specifications, see "Technical Specifications"
- Testing of wet or damp test objects
- Pumping off solids
- Suctioning of liquids into the device
- Operation without an exhaust line on the Gas Detection Unit
- Using the device in potentially explosive atmospheres
- Using the device with detectable defects or defective power switch

2.2 Duties of the operator

- Read, observe, and follow the information in this manual and in the work instructions provided by the owner. This concerns in particular the safety and warning instructions.
- Always observe the complete operating instructions for all work.
- If you have any questions about operation or maintenance that are not answered in this manual, contact customer service.

2.3 Owner requirements

The following notes are for companies or any person who is responsible for the safety and effective use of the product by the user, employees or third parties.

Safety-conscious operation

- Operate the device only if it is in perfect technical condition and has no damage.
- Only operate the device properly in accordance with this instruction manual, in a safety and risk conscious manner.
- Adhere to the following regulations and observe their compliance:
 - Intended use
 - Universally valid safety and accident prevention regulations
 - International, national and local standards and guidelines
 - Additional device-related provisions and regulations
- Only use original parts or parts approved by the manufacturer.
- Keep this instruction manual available on site.

Personnel qualifications

- Only instructed personnel should be permitted to work with and on the device. The instructed personnel must have received training on the device.
- Make sure that authorized personnel have read and understood the instruction manual and all other applicable documents.

3 Scope of delivery

Item	Quantity
Sniffer line SL3000 or SL3000XL in ordered version and quantity. See also "Accessories and spare parts [▶ 21]".	
Operating manual	1

4 Description

The SL3000 and SL3000XL sniffer lines are used to locate gas leaks on test specimens in conjunction with the leak detectors:

SL3000	SL3000XL
Protec P3000	Protec P3000XL
Ecotec E3000	XL3000flex
UL3000 Fab Plus	
UL3000 Fab ULTRA	
UL6000 Fab	

The sniffer lines are available in different lengths and with different sniffer tips, see “Accessories and spare parts [▶ 21]”.

The sniffer line consists of a multifunction cable, a sniffer handle and a sniffer tip.

There are special sniffer lines for robot applications, see “Scope of delivery [▶ 7]”.

4.1 SL3000

The SL3000 sniffer line pinpoints gas leaks on test specimens in conjunction with the leak detectors.

Construction

WARNING

Risk of eye damage

LEDs on the sniffer handle produce focused light that can damage the eyes.

▶ Do not look into the LEDs from a short distance or for longer periods of time.

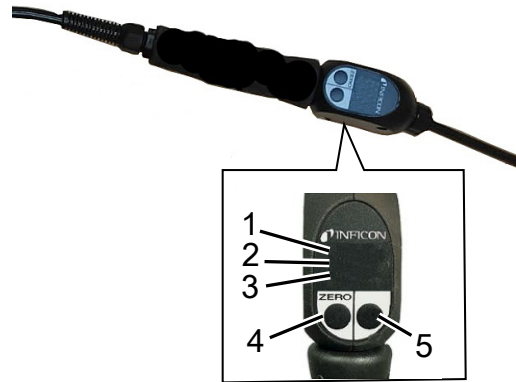
CAUTION

Danger of blockage due to liquids

Liquid may destroy the device.

▶ Do not draw in any liquids (e.g. water or adhesives).

The display of the sniffer handle displays part of the information of the main display.



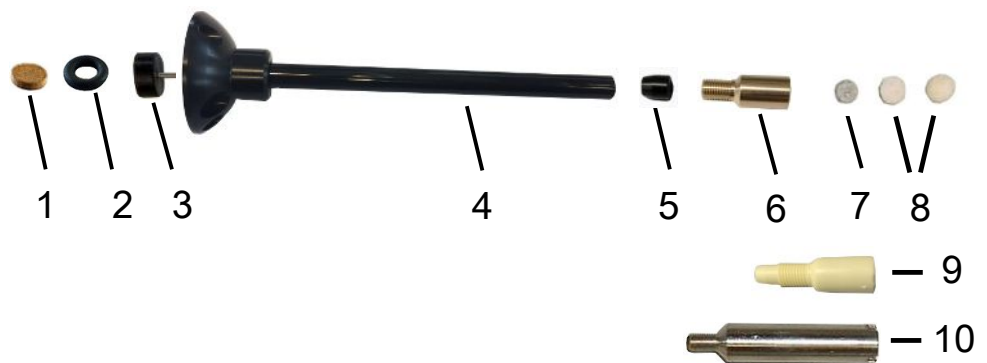
1	Leak rate as bar graph	4	"ZERO" push button
2	Leak rate, numerical	5	Push button (individual assignment)
3	Measured gas		

The leak rate is shown as a bar graph and displayed numerically. The unit of measurement is the same as on the main display of the respective leak detectors used.

There are two push buttons on the sniffer handle. Pressing the left button sets the background display to ZERO. For more information on the functions of these buttons, refer to the operating instructions of the leak detectors used.

The sniffer handle is equipped with LEDs for work in dimly lit places.

Sniffer tip SL3000



1	Sinter filter (bronze Poral filter)	5	cone seal
2	O ring	6	Brass capillary filter
3	Stainless steel capillary with adapter	7	Metal filter
4	Sniffer tip	8	Cotton filter
9	Replacement plastic capillary filter incl. filter set	10	Water conservation tip

4.2 SL3000XL

The SL3000XL sniffer line pinpoints gas leaks on test specimens in conjunction with the leak detectors.

Construction

WARNING

Risk of eye damage

LEDs on the sniffer handle produce focused light that can damage the eyes.

► Do not look into the LEDs from a short distance or for longer periods of time.

CAUTION

Danger of blockage due to liquids

Liquid may destroy the device.

► Do not draw in any liquids (e.g. water or adhesives).

The display of the sniffer handle displays part of the information of the main display.



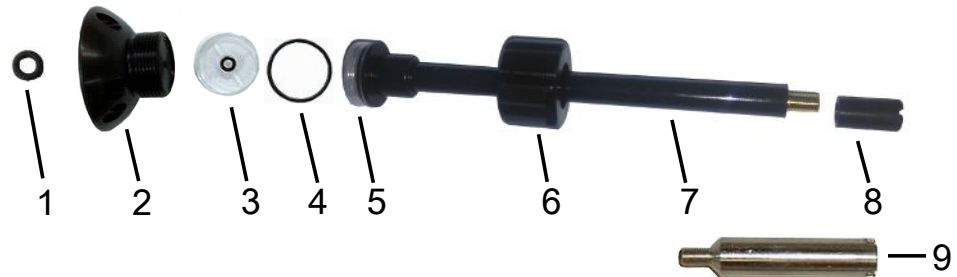
1	Leak rate as bar graph	4	"ZERO" push button
2	Leak rate, numerical	5	Push button (individual assignment)
3	Measured gas		

The leak rate is shown as a bar graph and displayed numerically. The unit of measurement is the same as on the main display of the leak detectors used.

There are two push buttons on the sniffer handle. Pressing the left button sets the background display to ZERO. For more information on the functions of these buttons, refer to the operating instructions of the leak detectors used.

The sniffer handle is equipped with LEDs for work in dimly lit places.

Sniffer tip SL3000XL



1	O ring	5	Adapter with sniffer tip
2	Connection adapter	6	Union nut
3	Filter	7	Sniffer tip
4	O ring	8	Tip protection
9	Water conservation tip		

4.3 Technical data

	SL3000	SL3000XL
Gas flow		
for Ecotec E3000	160 sccm	
for Protec P3000	300 sccm	
for UL3000 Fab, UL3000 Fab ULTRA, UL6000 Fab	160 sccm	
for Protec P3000XL		300 sccm / 3000 sccm
for XL3000flex		300 sccm / 3000 sccm
Good-Bad-Display		Yes
ZERO via button	Yes	Yes
Connection on the device	Via separate socket on the device	Via separate socket on the device
Display with measurement view	Yes	Yes
Acknowledge faults via buttons on the sniffer probe	Yes	Yes

	SL3000	SL3000XL
End standby via a button on the sniffer probe	Yes	Yes
Acknowledge calibration via a button on the sniffer probe	Yes	Yes

Electrical data

Operating voltage	5V
Mains frequency	DC voltage
Power consumption	20 VA

Ambient conditions

Max. height above sea level	2000 m
Maximum relative humidity	80% to 31 °C and 50% above 31 °C
Max. storage temperature	-20 °C to +60 °C
Permissible ambient temperature (during operation)	5 °C to 50 °C

5 Installation

For connection to the respective leak detector, the sniffer line is connected to the connection socket provided on the front or rear of the device for this purpose.

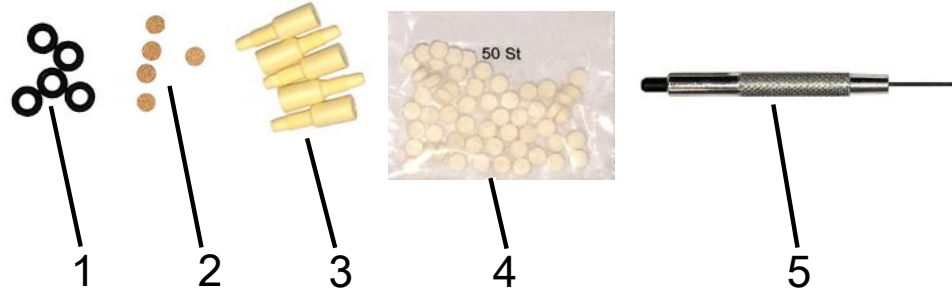
Via this connector both the electrical connection and the connection of the vacuum system is made.

- ✓ The leak detector has an interface for an SL3000 sniffer line.
- ✓ The SL3000 sniffer line is available.
- ▶ Connect the sniffer line to the leak detector.
- ⇒ The sniffer line is ready for operation.

6 Maintenance

6.1 Maintenance SL3000

SL3000 Filter kit no.
200004312



1	O-rings (5x)	4	Cotton filter (50x)
2	Sinter filter (bronze porous filter, 5x)	5	Needle tip tool
3	Replacement capillary filters made of plastic (5x)		

Change cotton filters
in the sniffer tip



Fig. 1: Sniffer tip SL3000 with cotton filters removed

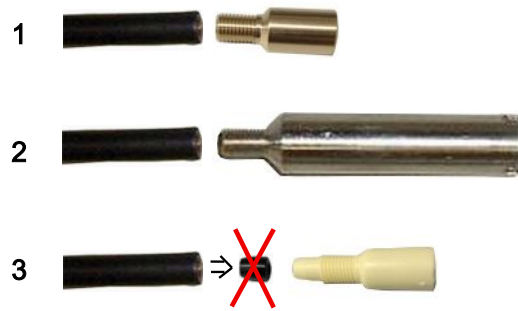
- ✓ The cotton filters in the sniffer tip are dirty (brass or plastic capillary filters).
- ✓ The sniffer tip is not screwed on.

1 Carefully remove both cotton beads from the front using the pointed end of the needle tip tool.

Note: The metal filter behind it is maintenance-free and must not be damaged or moved out of position by the needle point tool. This would impair the effectiveness of the metal filter. For the position of the metal filter, see also "SL3000 [► 8]".

2 Using the blunt end of the needle tip tool, stuff two clean cotton filters into the capillary filter.

Capillary filter change, different possibilities

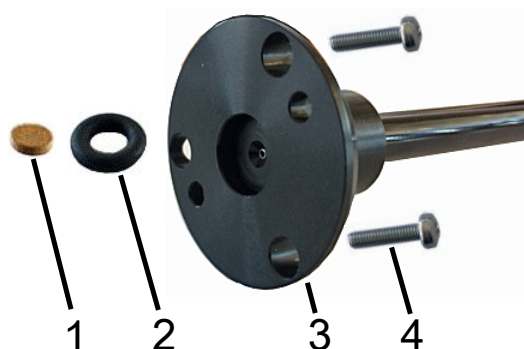


1	Sniffer tip and replacement capillary filter made of brass, cotton filter already included
2	Sniffer tip and protection from water tip, cotton filter not required
3	Sniffer tip and replacement capillary filter made of plastic, cotton filter already included. The cone seal must be removed from the sniffer tip. Use the needle tip tool for this purpose if required.

Procedure

- ✓ The capillary filter is to be replaced by a brass capillary filter. Or:
 - ✓ The capillary filter is to be replaced by a plastic capillary filter. Or:
 - ✓ The capillary filter should be replaced by a water protection tip.
 - 1 Unscrew the capillary filter.
 - 2 Take the new capillary filter made of brass or plastic or the water protection tip as desired. The necessary filters are already built in.
 - 3 If you want to replace a capillary filter made of brass with a capillary filter made of plastic, also remove the cone seal. See also "SL3000 [▶ 8]".
 - 4 Screw the new capillary filter or the water protection tip hand-tight onto the sniffer tip.
- ⇒ The new sniffer tip can be used again.

Check / replace sinter filter and O-ring



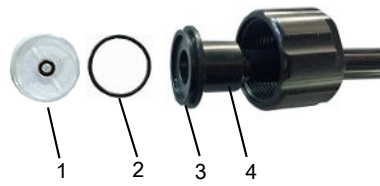
1	Sinter filter (bronze Poral filter)	3	Connection adapter
2	O ring	4	Mounting screws (2x)

- ✓ The leak tester is switched off and the sniffer line removed.
- ✓ The sniffer tube is removed from the sniffer handle.

- 1** Loosen the two fastening screws.
 - 2** Remove the O-ring and the sinter filter.
 - 3** Visually inspect the sinter filter and the O-ring for dirt and damage.
 - ⇒ If damage or dirt is found, always replace the O-ring and sinter filter in pairs.
 - 4** Screw the sniffer tube back on to the sniffer handle.
- ⇒ The sniffer line is ready to be used again.

6.2 Maintenance SL3000XL

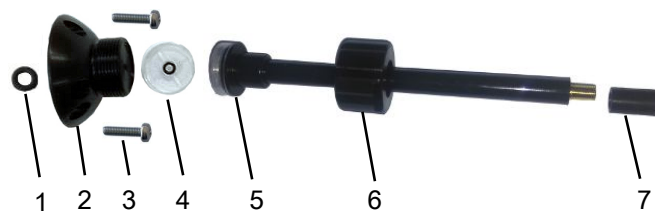
Overview



1	Filter	3	O-ring mount
2	O ring	4	Adapter with sniffer tube

Assembly

- ✓ The sniffer tip is removed from the sniffer handle.
- ✓ The O-ring is installed on the adapter in the intended mount.
- ▶ To install the filter, carefully place it on the adapter with a rotating motion.
 - ⇒ The filter must contact the surface evenly.



1	O ring	5	Adapter with sniffer tip
2	Connection adapter	6	Union nut
3	Mounting screws	7	Tip protection
4	Filter		

6.3 Maintenance plan

Assembly	Maintenance work SL3000/ SL3000XL	Operating hours/years (intervals are repeated)				Service level	Spare part number
		500	2000	10000	As required		
		1/4	1/2	1			
Check the sinter filter of the sniffer tip and replace, if necessary	Sinter filter for sniffer probe				1	I	20003 500
Replace the filter inserts of the capillary filters and the water conservation tip.	Felt for capillary filter				1	I	200001116

Explanation of the maintenance plan:

- I Service level I Customer
- II Service level II Customer with technical training
- III Service level III Authorized INFICON service technician
- X Carry out maintenance as per operating hours or duration
- X₁ no time limit only operating hours
- X₂ Carry out maintenance work as per duration
- 1 Depending on environment and use

7 Decommissioning the measuring instrument

7.1 Sending in the device



WARNING

Danger due to harmful substances

Contaminated devices could endanger the health. The contamination declaration serves to protect all persons who come into contact with the device.

► Fill in the declaration of contamination completely.

- 1** Please contact the manufacturer and send a completed declaration of contamination before sending anything to us.
⇒ You will then receive a return number.
- 2** Use the original packaging when returning.
- 3** Before sending the device, attach a copy of the completed contamination declaration. See below.

Declaration of Contamination

The service, repair, and/or disposal of vacuum equipment and components will only be carried out if a correctly completed declaration has been submitted. Non-completion will result in delay.
 This declaration may only be completed (in block letters) and signed by authorized and qualified staff.

1 Description of product

Type _____

Article Number _____

Serial Number _____

2 Reason for return

3 Operating fluid(s) used (Must be drained before shipping.)

4 Process related contamination of product:

toxic	no <input type="checkbox"/> 1)	yes <input type="checkbox"/>	
caustic	no <input type="checkbox"/> 1)	yes <input type="checkbox"/>	
biological hazard	no <input type="checkbox"/>	yes <input type="checkbox"/> 2)	
explosive	no <input type="checkbox"/>	yes <input type="checkbox"/> 2)	
radioactive	no <input type="checkbox"/>	yes <input type="checkbox"/> 2)	
other harmful substances	no <input type="checkbox"/> 1)	yes <input type="checkbox"/>	

2) Products thus contaminated will not be accepted without written evidence of decontamination!

The product is free of any substances which are damaging to health
 yes

1) or not containing any amount of hazardous residues that exceed the permissible exposure limits

5 Harmful substances, gases and/or by-products

Please list all substances, gases, and by-products which the product may have come into contact with:

Trade/product name	Chemical name (or symbol)	Precautions associated with substance	Action if human contact

6 Legally binding declaration:

I/we hereby declare that the information on this form is complete and accurate and that I/we will assume any further costs that may arise. The contaminated product will be dispatched in accordance with the applicable regulations.

Organization/company _____

Address _____ Post code, place _____

Phone _____ Fax _____

Email _____

Name _____

Date and legally binding signature _____ Company stamp _____

Copies:
 Original for addressee - 1 copy for accompanying documents - 1 copy for file of sender

8 Appendix

8.1 Accessories and spare parts

Sniffer line SL3000	
SL3000-3, sniffer line 3 m length	525-001
SL3000-5, sniffer line 5 m length	525-002
Sniffer line SL3000-5, 5 m length, with FTS385XL tip	521-034
SL3000-10, sniffer line 10 m length	525-003
SL3000-15, sniffer line 15 m length	525-004
Sniffer tips for SL3000	
Sniffer tip ST312, 120 mm long, rigid	12213
Sniffer tip FT312, 120 mm long, flexible	12214
Sniffer tip ST200, 200 mm long, rigid	12218
Sniffer tip FT250, 250 mm long, flexible	12266
Sniffer tip ST385, 385 mm long, rigid	12215
Sniffer tip FT385, 385 mm long, flexible	12216
Sniffer tip FT600, 600 mm long, flexible	12209
Sniffer tip, rigid, 500 mm. 45° angled(ST 500)	12272
Water conservation tip	511-025
Spare parts kit (complete)	200004312
Sniffer line SL3000XL	
SL3000XL-3, sniffer line 3m length	521-011
SL3000XL-5, sniffer line 5m length	521-012
SL3000XL-10, sniffer line 10m length	521-013
SL3000XL-15, sniffer line 15m length	521-014
Sniffer tips for SL3000XL	
Sniffer tip ST312XL	521-018
Sniffer tip FT312XL	521-019
Sniffer tip ST385XL	521-020
Sniffer tip FT385XL	521-021
Sniffer tip FT250XL	521-022
Sniffer tip FTS312XL	521-026
Sniffer tip FTS385XL	521-027

Sniffer tip FTS250XL	521-028
Holder for sniffer line SL3000/SL3000XL	551-203
Sniffer tip compl. 120 mm	20003685
Spare part sniffer tip compl. 400 mm	20003690
Reinforced gooseneck for FTS312XL	200008918
Reinforced gooseneck for FTS385XL	200008919
Reinforced gooseneck for FTS250XL	200008920

8.2 CE Declaration of Conformity



We – INFICON GmbH - herewith declare that the products defined below meet the basic requirements regarding safety and health and relevant provisions of the relevant EU Directives by design, type and the versions which are brought into circulation by us. This declaration of conformity is issued under the sole responsibility of INFICON GmbH.

In case of any products changes made without our approval, this declaration will be void.

Designation of the product:

Sniffer line

Models:

SL3000

SL3000XL

The products meet the requirements of the following Directives:

- **Directive 2014/30/EU (Electromagnetic Compatibility)**
- **Directive 2011/65/EU (RoHS)**

Applied harmonized standards:

- **EN 61326-1:2013**
Class A according to EN 55011:2016+A1 :2017
- **EN IEC 63000:2018**
- **EN ISO 12100:2010**

Catalogue numbers:

521-011	525-001
521-012	525-002
521-013	525-003
521-014	525-004
521-015	525-005
521-034	521-035

Authorised person to compile the relevant technical files:

Heinz Rauch, INFICON GmbH, Bonner Strasse 498, D-50968 Cologne

Cologne, November 11th, 2021

H. Bruhns, Vice President LDT

Cologne, November 11th, 2021

pro

W. Schneider, Research and Development

INFICON GmbH
Bonner Strasse 498
D-50968 Cologne
Tel.: +49 (0)221 56788-0
Fax: +49 (0)221 56788-90
www.inficon.com
E-mail: leakdetection@inficon.com

Index

C

Capillary filter change	15
Change cotton filter	14
Connection	13

D

Declaration of Contamination	19, 20
------------------------------	--------

F

Filter kit	14
------------	----

G

Gas flow	11
----------	----

I

Incorrect usage	5
-----------------	---

R

Return	19
--------	----

S

Sniffer line	21
Sniffer tips	21
Spare parts	21



Due to our continuing program of product improvements, specifications are subject to change without notice.
The trademarks mentioned in this document are held by the companies that produce them.